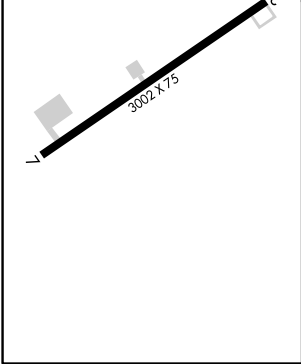
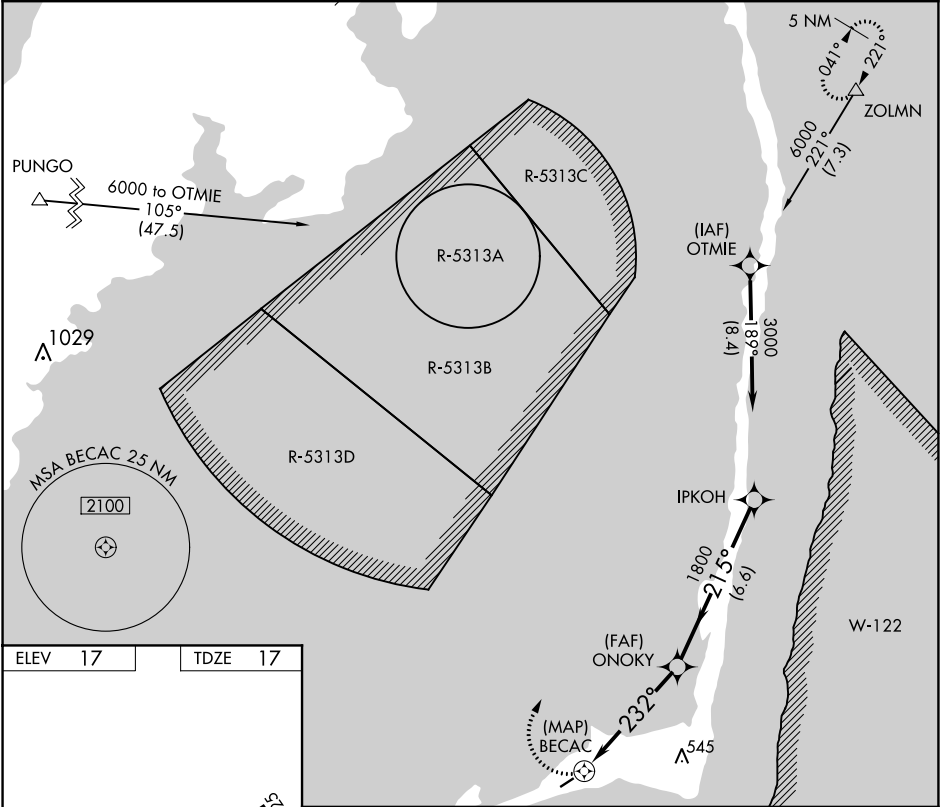


APP CRS	Rwy Idg	3002
232°	TDZE	17
	Apt Elev	17

RNAV (GPS) RWY 25
BILLY MITCHELL (HSE)

NA	Procedure NA at night. GPS or RNP-0.3 required. DME/DME RNP-0.3 NA.	MISSED APPROACH: Climbing right turn to 6000 via course 032° to ZOLMN WP and hold.
----	---	---

ASOS 118.375	CHERRY POINT APP CON 119.75 360.775	CTAF 122.9
-----------------	--	---------------



6000

crs 032°

ZOLMN

△

ONOKY

IPKOH

3000

BECAC

232°

3.00°

TCH 40

1800

215°

Procedure Turn

NA

0.5

5 NM

6.6 NM

CATEGORY	A	B	C	D
LNAV MDA	520-1	503 (600-1)	520-1½ 503 (600-1½)	NA
CIRCLING	560-1	543 (600-1)	560-1½ 543 (600-1½)	NA