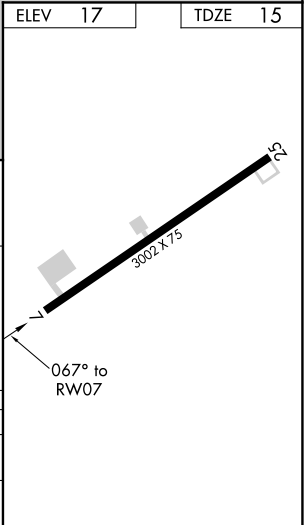
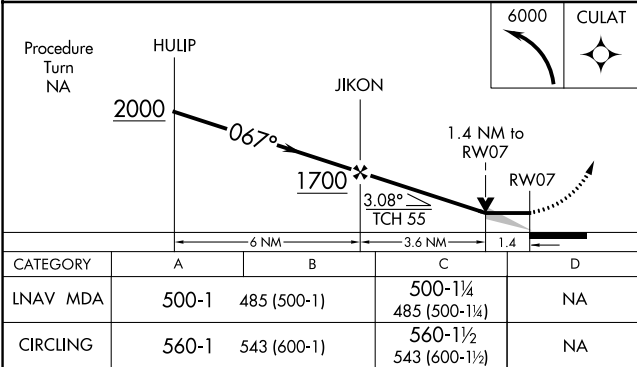
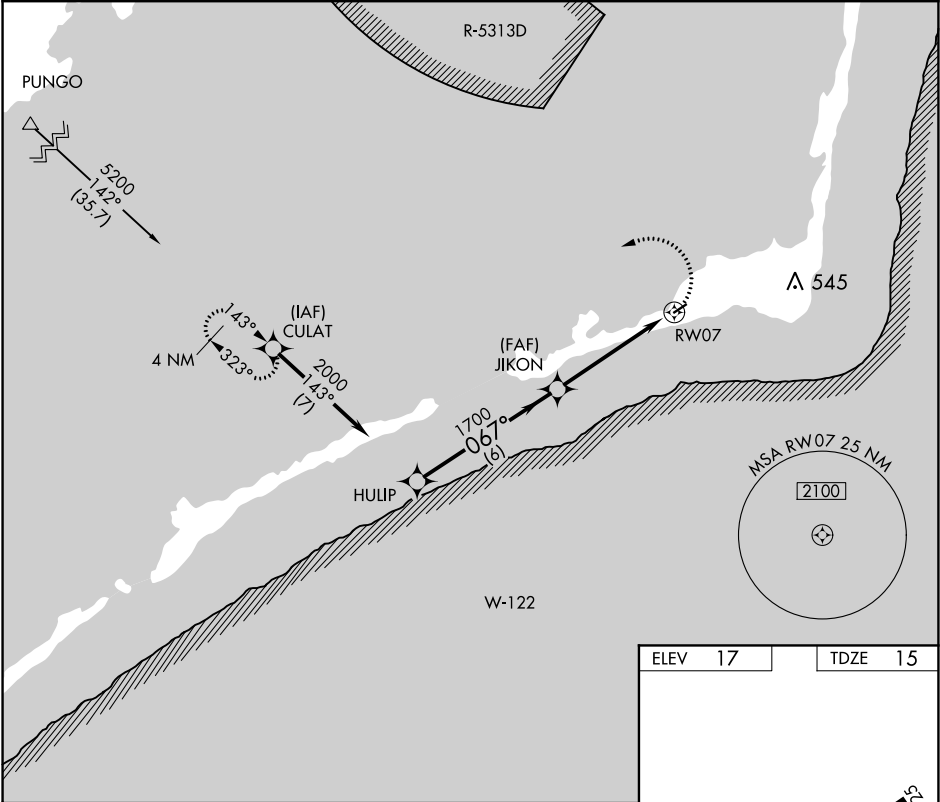


APP CRS	Rwy Idg	3002
067°	TDZE	15
	Apt Elev	17

RNAV (GPS) RWY 7
BILLY MITCHELL (HSE)

 NA	Procedure NA at night. GPS or RNP-0.3 required. DME/DME RNP-0.3 NA.	MISSED APPROACH: Climbing left turn to 6000 direct CULAT WP and hold.
--	---	--

ASOS 118.375	CHERRY POINT APP CON 119.75 360.775	CTAF 122.9
-----------------	--	---------------



SE-2, 03 DEC 2020 to 31 DEC 2020

SE-2, 03 DEC 2020 to 31 DEC 2020