

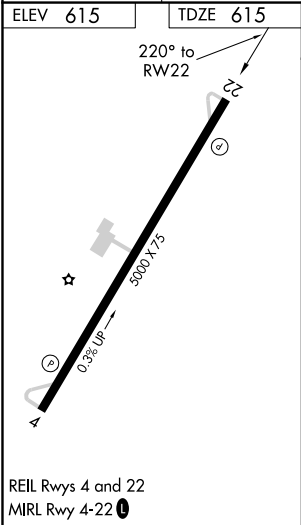
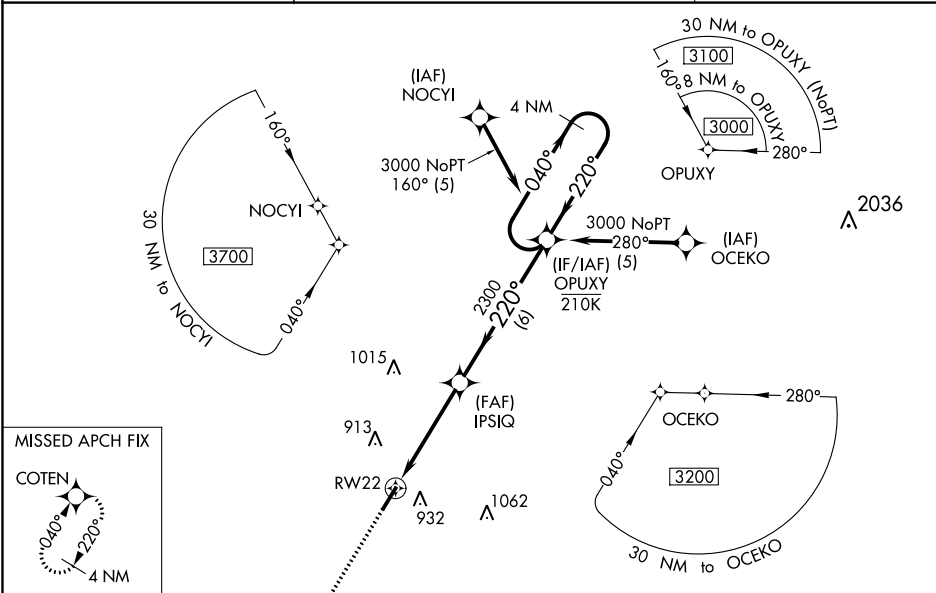
WAAS CH 40335 W22A	APP CRS 220°	Rwy Idg 5000 TDZE 615 Apt Elev 615
--	------------------------	---

RNAV (GPS) RWY 22
SILER CITY MUNI (SCR)

⚠ For uncompensated Baro-VNAV systems, LNAV/VNAV NA below -16°C (4°F) or above 54°C (130°F). DME/DME RNP-0.3 NA. Procedure NA at night. Baro-VNAV NA when using Asheville altimeter setting. Rwy 4, 22 helicopter visibility reduction below 1 SM NA. When local altimeter setting not received, use Asheville altimeter setting: increase all DA 53 feet and all MDA 60 feet; increase LPV all Cats, LNAV/VNAV all Cats, and LNAV Cat C visibilities 1/8 mile, increase Circling Cat C visibility 1/4 mile.

MISSED APPROACH:
Climb to 3000 direct COTEN and hold.

AWOS-3 125.775	GREENSBORO APP CON 126.6 327.075	UNICOM 122.7 (CTAF) 0
--------------------------	--	---------------------------------



3000		COTEN	VGSI and RNAV glidepath not coincident (VGSI Angle 3.00/TCH 30).		4 NM Holding Pattern
OPUXY		IPSIQ	2300	2300	3000
RWY 22		4.4 NM		6 NM	GP 3.50° TCH 40
CATEGORY	A	B	C	D	
LPV DA	954-1		339 (400-1)		NA
LNAV/VNAV DA	1140-1 5/8		525 (600-1 5/8)		NA
LNAV MDA	1160-1		545 (600-1)		1160-1 5/8 545 (600-1 5/8)
CIRCLING	1240-1		625 (700-1)		1240-1 3/4 625 (700-1 3/4)

SE-2, 03 DEC 2020 to 31 DEC 2020

SE-2, 03 DEC 2020 to 31 DEC 2020