

WAAS  
CH **86638**  
**W24A**

APP CRS  
**235°**

Rwly Idg  
TDZE **86**  
Apt Elev **99**

**RNAV (GPS) RWY 24**  
COLUMBUS COUNTY MUNI (CPC)

RNP APCH

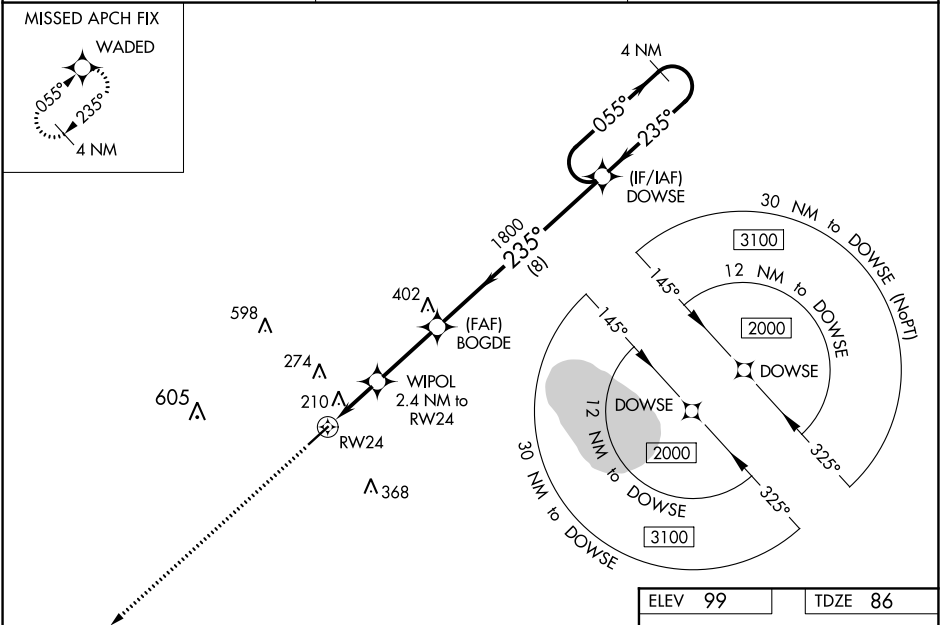
▼

▲

For uncompensated Baro-VNAV systems, LNAV/VNAV NA below -15°C (5°F) or above 54°C (130°F). Baro-VNAV and VDP NA when using Elizabethtown altimeter setting. Helicopter visibility reduction below ¾ SM NA. When local altimeter setting not received, use Elizabethtown altimeter setting and increase LPV DA to 427 feet, LNAV/VNAV DA to 441 feet and all visibilities ¼ mile. Increase all MDA 60 feet and all Cat C and D visibilities ¼ mile.

MISSED APPROACH:  
Climb to 2000 direct  
WADED and hold.

AWOS-3 <b>118.375</b>	MYRTLE BEACH APP CON ★ <b>119.2 350.3</b>	UNICOM <b>122.8 (CTAF) 0</b>
--------------------------	--	---------------------------------



2000  
↑

WADED  
✧

VGSI and RNAV glidepath not coincident  
(VGSI Angle 3.25/TCH 42).

\*LNAV only.

WIPOL 2.4 NM to RW24

BOGDÉ 1800

DOWSE 4 NM Holding Pattern

235°

055°

2000

1800

\*860

GP 3.00° TCH 40

1 NM

1.4

2.9 NM

8 NM

CATEGORY	A	B	C	D
LPV DA		374-1	288 (300-1)	
LNAV/VNAV DA		388-1½	302 (300-1½)	
LNAV MDA		460-1	374 (400-1)	
CIRCLING	520-1 421 (500-1)	580-1 481 (500-1)	680-1½ 581 (600-1½)	780-2¼ 681 (700-2¼)

235° to RW24

0.5% UP

5500 X 75

REIL Rwy 6 and 24 0  
MIRL Rwy 6-24 0