

WAAS  
CH **99717**  
**W36A**

APP CRS  
**360°**

Rwy Idg  
TDZE **1228**  
Apt Elev **1269**

**RNAV (GPS) RWY 36**

MOUNT AIRY/SURRY COUNTY (MWK)

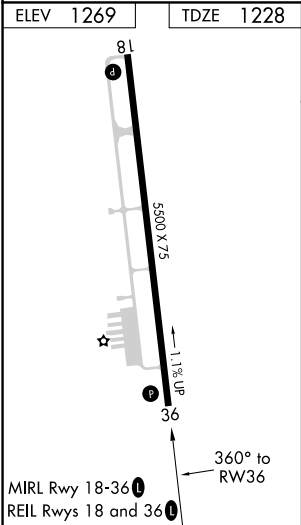
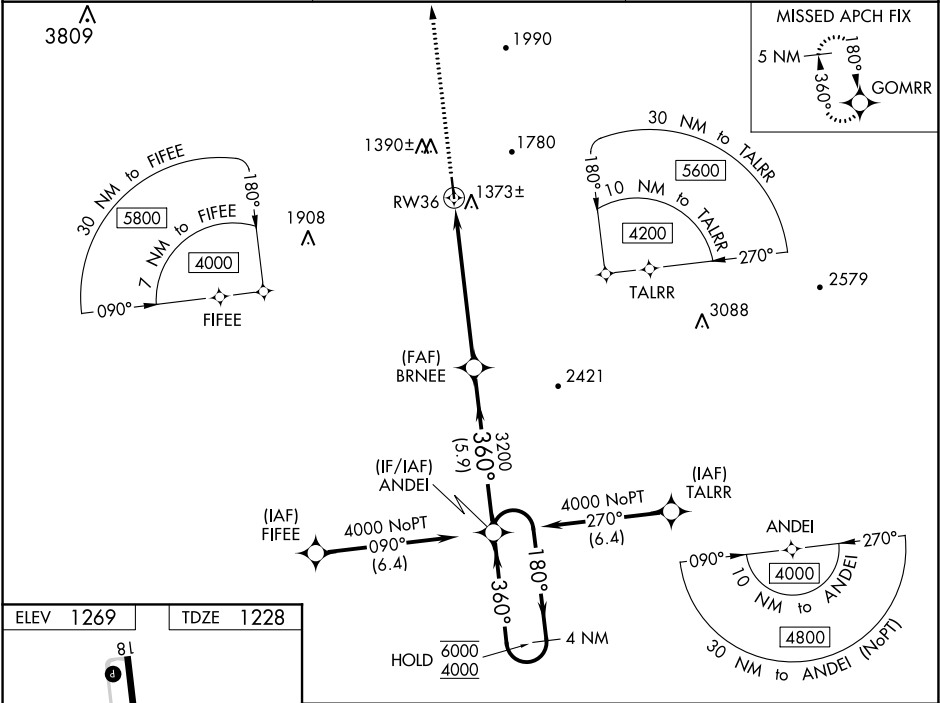
RNP APCH.

▼ Rwy 36 helicopter visibility reduction below ¾ SM NA.

▲ For uncompensated Baro-VNAV systems, LNAV/VNAV NA below -17°C or above 54°C.

MISSED APPROACH: Climb to 5000 direct GOMRR and hold.

AWOS-3 <b>121.125</b>	GREENSBORO APP CON <b>124.35 269.225</b>	UNICOM <b>123.0 (CTAF) 0</b>
--------------------------	---	---------------------------------



5000 ↑ GOMRR ✧	<p>BRNEE 3200</p> <p>ANDEI</p> <p>4 NM Holding Pattern</p> <p>180° → 6000 ← 360° 4000</p> <p>GP 3.00° TCH 40</p> <p>1.2 NM 4.9 NM 5.9 NM</p>			
*LNAV only.	*1.2 NM to RW36			
CATEGORY	A	B	C	D
LPV DA	1527-1 299 (300-1)			
LNAV/VNAV DA	1637-1½ 409 (400-1½)			
LNAV MDA	1640-1 412 (400-1)		1640-1½ 412 (400-1½)	
CIRCLING	1940-1 671 (700-1)	2040-1 771 (800-1)	2180-2¾ 911 (1000-2¾)	2340-3 1071 (1100-3)