

ILS Z or LOC Z RWY 3
JOHNSTON RGNL (JNX)

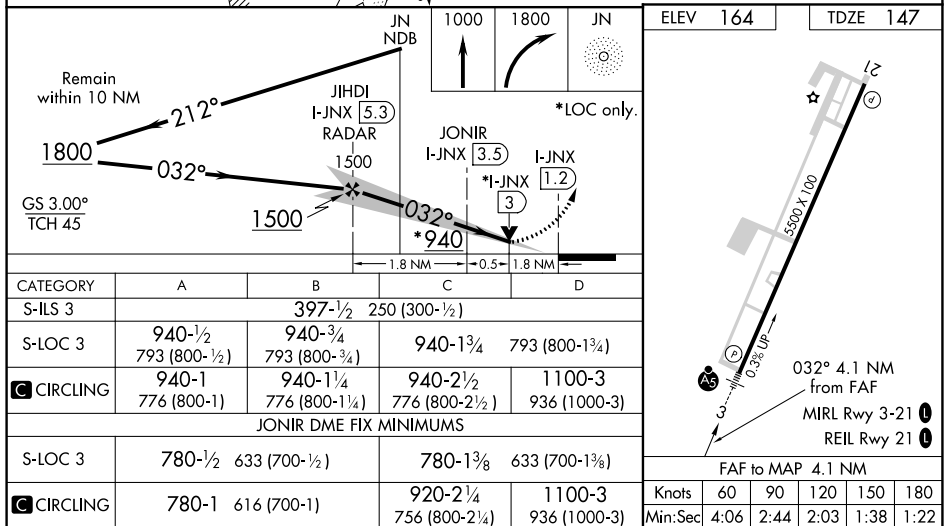
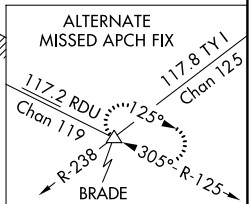
MALSR

▼ VDP NA with Erwin altimeter setting. When local altimeter setting not received, use
▲ NA Erwin altimeter setting; increase DA to 447 feet and all MDAs 60 feet; increase
 S-LOC 3 Cats C/D and Circling Cat A visibility $\frac{1}{4}$ SM; JONIR DME fix minimums
 increase S-LOC 3 Cats C/D visibility $\frac{1}{8}$ SM and Circling Cat C visibility $\frac{1}{4}$ SM. For
 inop ALS, increase S-LOC 3 Cats C/D visibility to $2\frac{1}{2}$ SM; increase JONIR DME fix
 minimums Cats C/D visibility to $1\frac{1}{4}$ SM. For inop ALS when using Erwin altimeter
 setting, increase S-ILS all Cats visibility to 1 SM.

MALSR

MISSED APPROACH:
Climb to 1000 then
climbing right turn to
1800 direct JN NDB
and hold.

△ BRADE



SE-2, 03 DEC 2020 to 31 DEC 2020