

WAAS
CH **90527**
W23A

APP CRS
229°

Rwy Idg
TDZE **26**
Apt Elev **26**

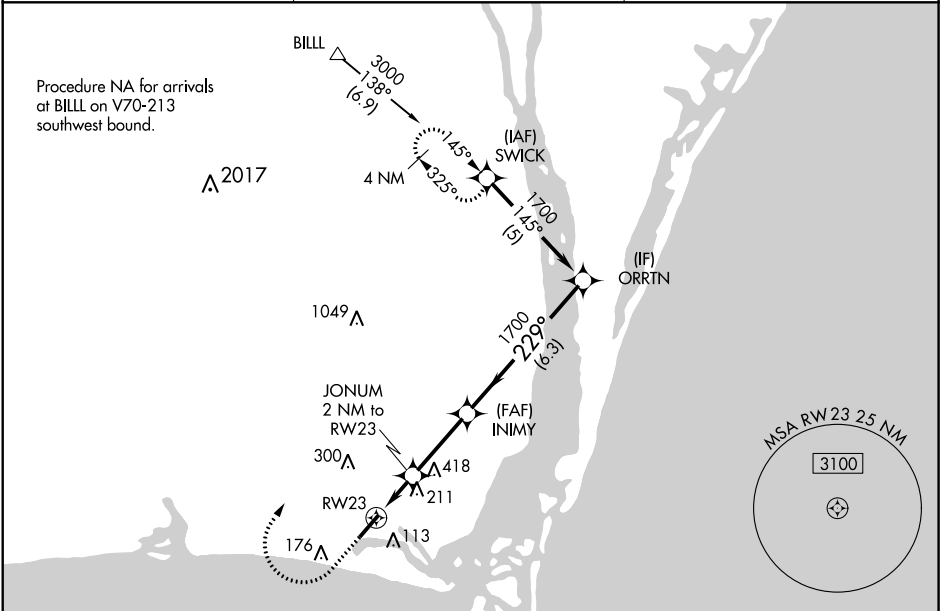
5105
26
26

RNAV (GPS) RWY 23
CAPE FEAR RGNL JETPORT/HOWIE FRANKLIN FLD (SU'T)

Baro-VNAV NA when using Wilmington altimeter setting. For uncompensated Baro-VNAV systems, LNAV/VNAV NA below -15°C (5°F) or above 54°C (130°F). When local altimeter setting not received, use Wilmington altimeter setting, and increase all DA 52 feet and all MDA 60 feet. DME/DME RNP-0.3 NA. Helicopter visibility reduction below ¾ SM NA. VDP NA when using Wilmington altimeter setting.

MISSED APPROACH: Climb to 500 then climbing right turn to 3000 direct SWICK and hold.

AWOS-3P 124.175	WILMINGTON APP CON ★ 118.25 284.65	UNICOM 123.05 (CTAF) 0
---------------------------	--	---



500 3000 SWICK

* LNAV only

RW23

RW23

RW23

* 1 NM to RW23

* 720

JONUM 2 NM to RW23

INIMY 1700

ORRTN 1700

GP 3.08° TCH 60

VGSI and RNAV glidepath not coincident (VGSI Angle 4.00/TCH 32).

1 NM 1 NM 2.9 NM 6.3 NM

CATEGORY	A	B	C	D
LPV DA	284-1	258 (300-1)		NA
LNAV/VNAV DA	276-1	250 (300-1)		NA
LNAV MDA	480-1	454 (500-1)	480-1 3/8 454 (500-1 3/8)	NA
CIRCLING	480-1	454 (500-1)	520-1 1/2 494 (500-1 1/2)	NA

ELEV 26 D TDZE 26

229° to RW23

5303 X 100

MIRL Rwy 5-23 0