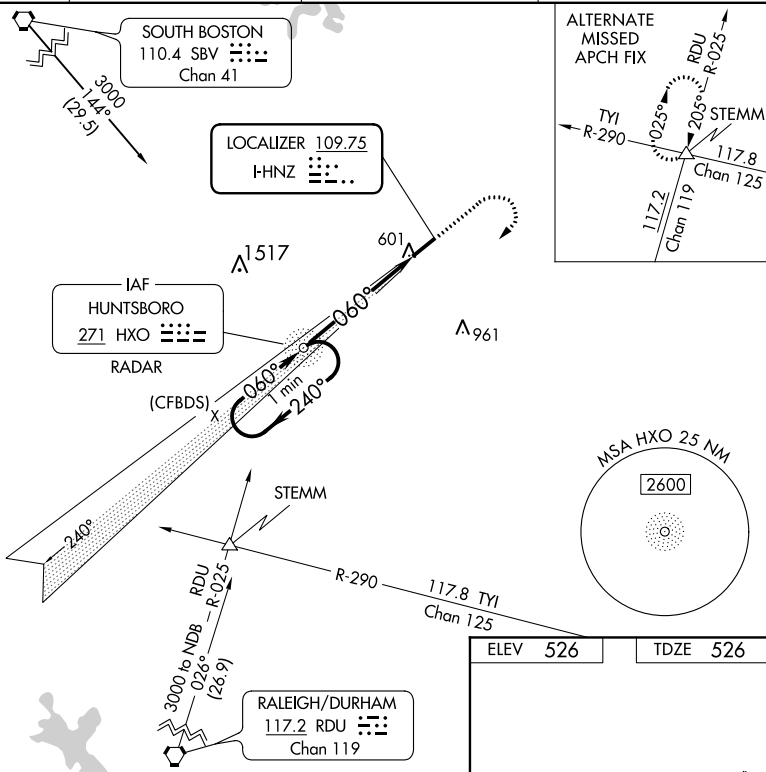


LOC RWY 6  
HENDERSON-OXFORD (HNZ)

**MISSED APPROACH:** Climb to 1200 then climbing right turn to 2600 direct HXO NDB/RADAR and hold.

to 1200 then climbing right  
turn to 2600 direct HXO  
NDB/RADAR and hold.

UNICOM  
122.8(CTAF) L

$\frac{3.36}{TCH\ 53}$

REIL Rwy 6 **L**  
MIRL Rwy 6-24 **L**

FAF to MAP 5.2 NM

Knots	60	90	120	150	180
Min:Sec	5:12	3:28	2:36	2:05	1:44