

WAAS CH 45709 W06A	APP CRS 060°	Rwy Idg TDZE 526 Apt Elev 526
--	------------------------	---

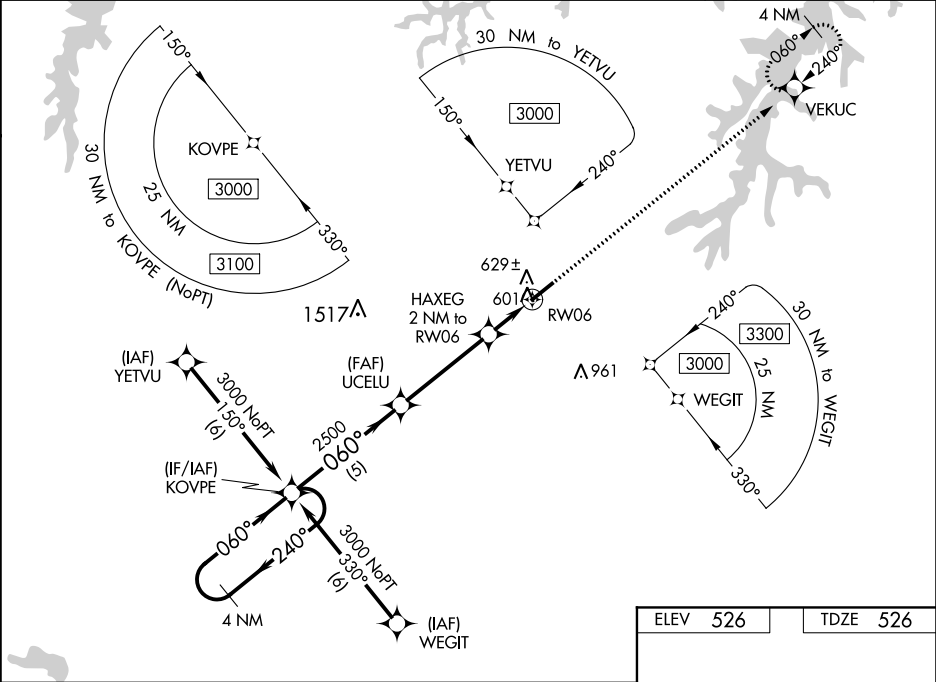
RNAV (GPS) RWY 6

HENDERSON-OXFORD (HNZ)

▼ For uncompensated Baro-VNAV systems, LNAV/VNAV NA below -16°C (4°F) or above 54°C (130°F).
▲ DME/DME RNP-0.3 NA. When local altimeter setting not received, use Roxboro altimeter setting and increase all DA 64 feet and all MDA 80 feet; increase LPV and LNAV/VNAV all Cnts visibility ¼ mile, LNAV and Circling Cnts C and D visibility ¼ mile. Baro-VNAV and VDP NA when using Roxboro altimeter setting. Helicopter visibility reduction below ¾ SM NA.

MISSED APPROACH: Climb to 3000 direct VEKUC and hold.

AWOS-3 118.625	RALEIGH APP CON 132.35 256.9	GCO 135.075	UNICOM 122.8 (CTAF) 0
--------------------------	--	-----------------------	---------------------------------



4 NM Holding Pattern		VGSI and RNAV glidepath not coincident (VGSI Angle 3.50/TCH 27).		3000	VEKUC
KOVPE		UCELU		HAXEG	*LNAV only.
3000 ← 240°		2500		2 NM to RWY06	*0.9 NM to RWY06
GP 3.00°		*1200		RWY06	
TCH 53		5 NM		1.1 NM	0.9
CATEGORY	A	B	C	D	
LPV DA		814-7/8	288 (300-7/8)		
LNAV/VNAV DA		810-7/8	284 (300-7/8)		
LNAV MDA		880-1	354 (400-1)		
CIRCLING	960-1 434 (500-1)	980-1 454 (500-1)	1100-1½ 574 (600-1½)	1280-2½ 754 (800-2½)	

