

WAAS CH <b>45904</b> <b>W23A</b>	APP CRS <b>228°</b>	Rwy Idg TDZE Apt Elev	<b>5000</b> <b>202</b> <b>202</b>
--	------------------------	-----------------------------	---

RNAV (GPS) RWY 23

HARNETT RGNL JETPORT (HRJ)

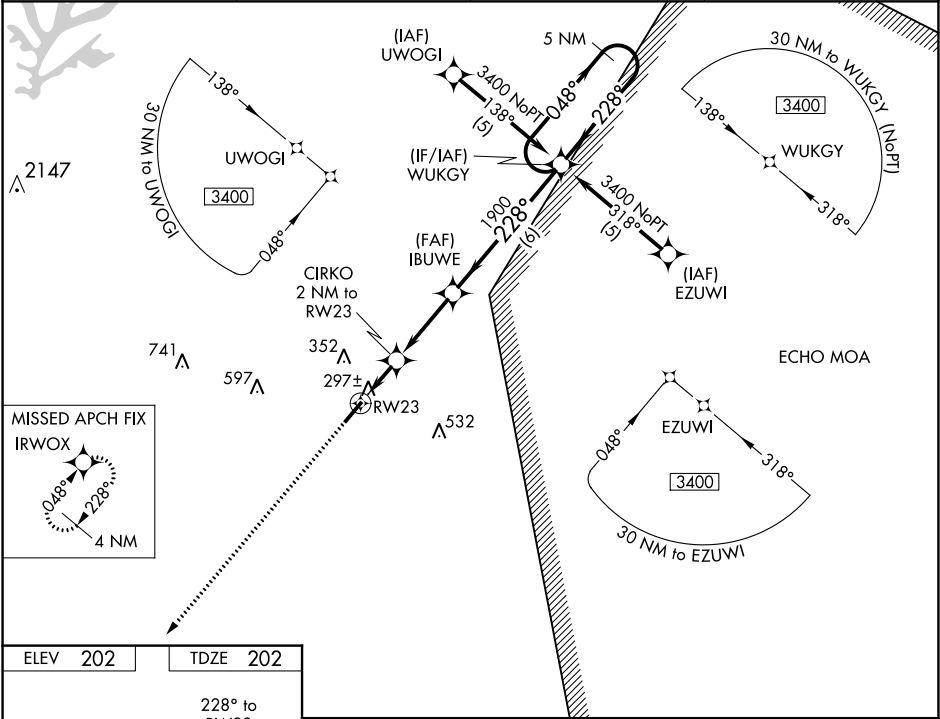
⚠

⚠

When local alimeter setting not received, use Smithfield alimeter setting and increase all DA/MDA 60 feet; increase LPV visibilities ¼ mile, and LNAV Cat. C visibility ¼ mile. DME/DME RNP-0.3 NA. Visibility reduction by helicopters NA. VDP NA when using Smithfield alimeter setting.

MISSED APPROACH:  
Climb to 2500 direct  
IRWOX and hold.

AWOS-3 <b>119.025</b>	FAYETTEVILLE APP CON <b>125.175 285.575</b>	GCO <b>135.075</b>	UNICOM <b>122.7 (CTAF) 0</b>
--------------------------	--	-----------------------	---------------------------------





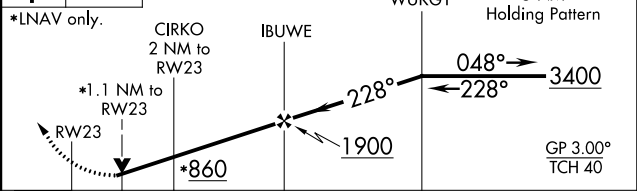
ELEV 202    TDZE 202

228° to RW23

5000 x 75

0.3% UP

REIL Rwy 5-23 0  
MIRL Rwy 5-23 0

2500	IRWOX	VGSI and RNAV glidepath not coincident (VGSI Angle 3.00/TCH 35).		
				
*LNAV only.				
				
CATEGORY	A	B	C	D
LPV DA	551-1¼ 349 (400-1¼)			NA
LNAV MDA	600-1 398 (400-1)			NA
CIRCLING	600-1 398 (400-1)	660-1 458 (500-1)	720-1½ 518 (600-1½)	NA