

LOC I-VUJ	APP CRS	Rwy Idg	5499
110.55	223°	TDZE	584
		Apt Elev	609

ILS or LOC RWY 22L

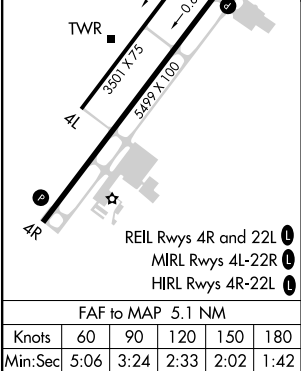
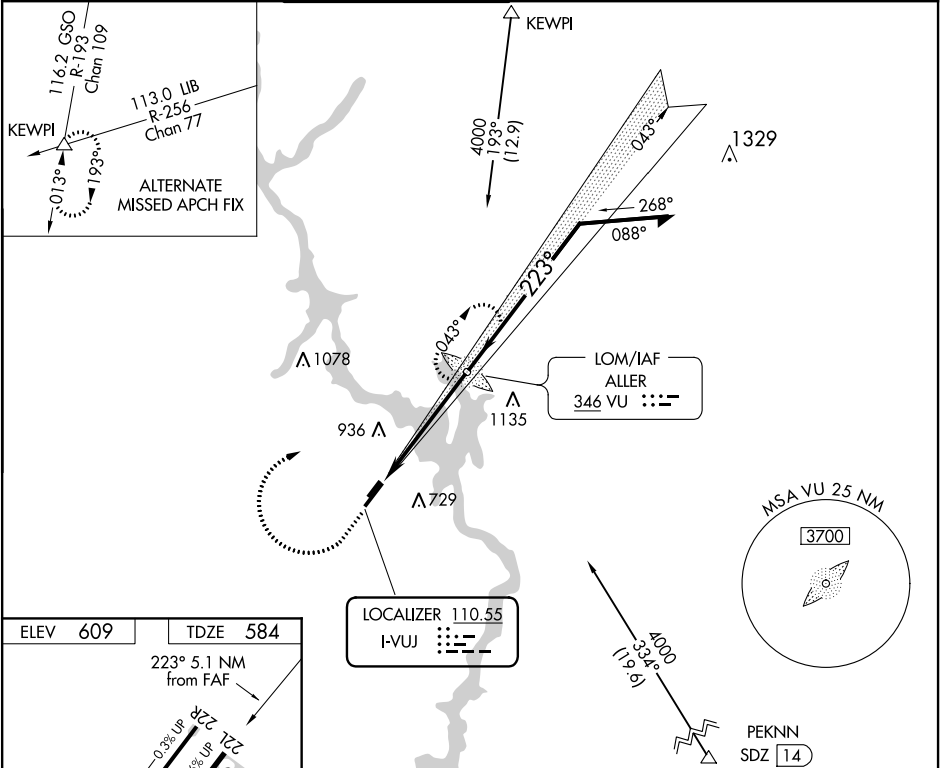
STANLY COUNTY (VUJ)

ADF required.

Circling Rwy 4L, 22R NA at night. When local altimeter setting not received, use Asheboro altimeter setting; increase DA to 953 and all visibilities 1/8 SM; ASR/PAR increase all MDAs 60 feet and visibility Cats C and D 1/4 SM.

MISSED APPROACH: Climb to 1500 then climbing right turn to 4000 direct ALLER LOM and hold, continue climb-in-hold to 4000.

AWOS-3	CHARLOTTE APP CON	STANLY COUNTY TOWER*	GND CON	CLNC DEL	UNICOM
128.175	128.325 307.8	126.275 (CTAF) 0 291.9	121.75 254.375	121.75 254.375	123.0



1500	4000	VU	VU LOM	Remain within 10 NM
			2255	043°
			2400	223°
			2600	
			GS 3.00°	TCH 40
			5.1 NM	
CATEGORY	A	B	C	D
S-ILS 22L		900-7/8	316 (300-7/8)	
S-LOC 22L	1100-1	516 (500-1)	1100-13/8	516 (500-13/8)
CIRCLING	1260-1	651 (700-1)	1260-13/4	1260-2
			651 (700-13/4)	651 (700-2)