

KNIGHTS TWO DEPARTURE

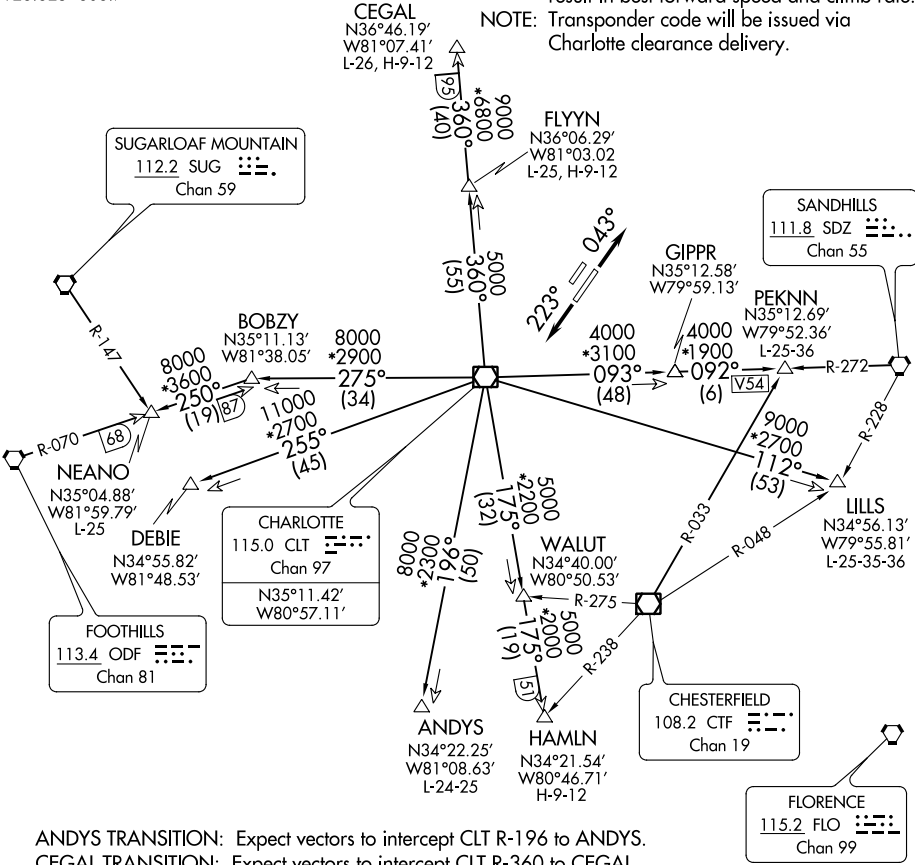
AWOS-3
128.175
CLNC DEL
121.75 254.375
GND CON
121.75 254.375
STANLEY COUNTY TOWER★
126.275 (CTAF) 291.9
UNICOM
123.0
CHARLOTTE DEP CON
128.325 308.7

TAKEOFF MINIMUMS

Rwys 4, 22R: NA.
Rwy 22L: Standard.
Rwy 4R: 300-1½ or standard with minimum climb
of 276' per NM to 1000.

TOP ALTITUDE:
3000

NOTE: For propeller aircraft only.
NOTE: RADAR and DME required.
NOTE: Turboprops: Operate in a manner that will
result in best forward speed and climb rate.
NOTE: Transponder code will be issued via
Charlotte clearance delivery.



ANDYS TRANSITION: Expect vectors to intercept CLT R-196 to ANDYS.
CEGAL TRANSITION: Expect vectors to intercept CLT R-360 to CEGAL.
DEBIE TRANSITION: Expect vectors to intercept CLT R-255 to DEBIE.
FLYNN TRANSITION: Expect vectors to intercept CLT R-360 to FLYNN.
HAMLN TRANSITION: Expect vectors to intercept CLT R-175 to HAMLN.
LILLS TRANSITION: Expect vectors to intercept CLT R-112 to LILLS.
NEANO TRANSITION: Expect vectors to intercept CLT R-275 to BOBZY then ODF R-070 to NEANO.
PEKNN TRANSITION: Expect vectors to intercept CLT R-093 to GIPIPR then SDZ R-272 to PEKNN.

NOTE: Chart not to scale.

(NARRATIVE ON FOLLOWING PAGE)

KNIGHTS TWO DEPARTURE