

WAAS CH 69418 W25A	APP CRS 247°	Rwy Idg TDZE Apt Elev	3434 8 9
--	------------------------	-----------------------------	-------------------------------------

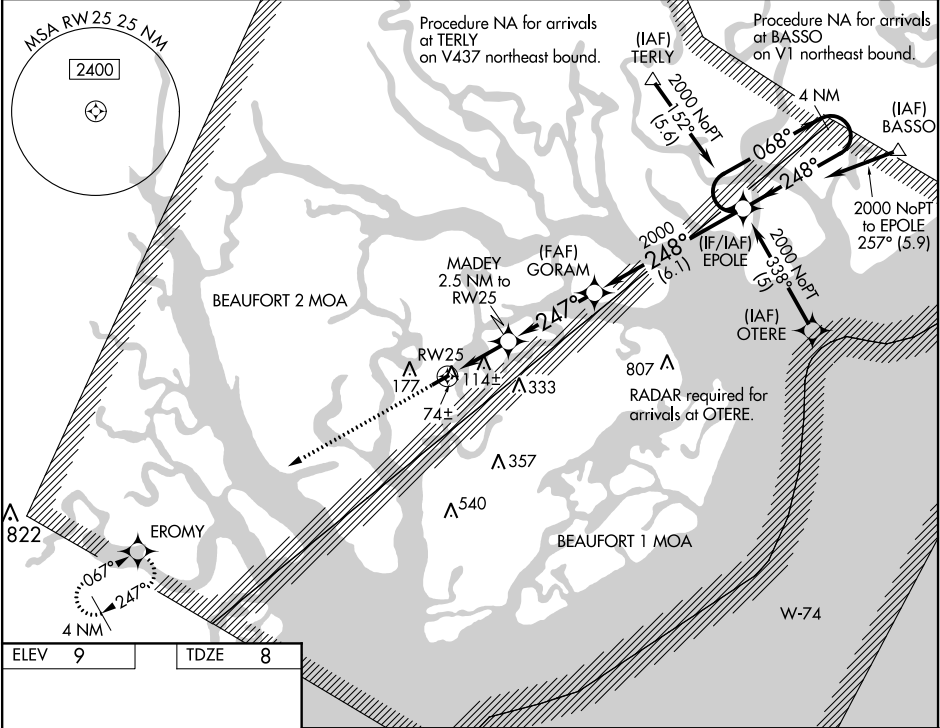
RNAV (GPS) RWY 25
BEAUFORT EXECUTIVE (A.R.W)

⚠ **ASR**

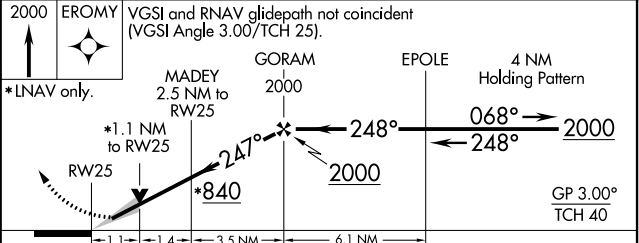
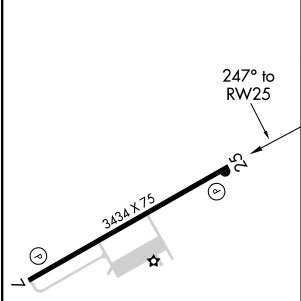
For uncompensated Baro-VNAV systems, LNAV/VNAV NA below -15°C (5°F) or above 54°C (130°F). DME/DME RNP-0.3 NA. When local altimeter setting not received, use Beaufort MCAS/Merritt Field altimeter setting and increase LPV DA to 226, LNAV/VNAV DA to 352, and all MDA 20 feet. VDP and Baro-VNAV NA when using Beaufort MCAS/Merritt Field altimeter setting.

MISSED APPROACH:
Climb to 2000 direct EROMY and hold.

AWOS-3 119.675	BEAUFORT APP CON★ 125.125 292.125	UNICOM 122.7 (CTAF) 0
--------------------------	---	---------------------------------



ELEV 9	TDZE 8
---------------	---------------



CATEGORY	A	B	C	D
LPV DA	208-1	200 (200-1)		NA
LNAV/VNAV DA	334-1¼	326 (400-1¼)		NA
LNAV MDA	380-1	372 (400-1)		NA
CIRCLING	480-1	471 (500-1)	480-1½ 471 (500-1½)	NA

SE-2, 03 DEC 2020 to 31 DEC 2020

SE-2, 03 DEC 2020 to 31 DEC 2020