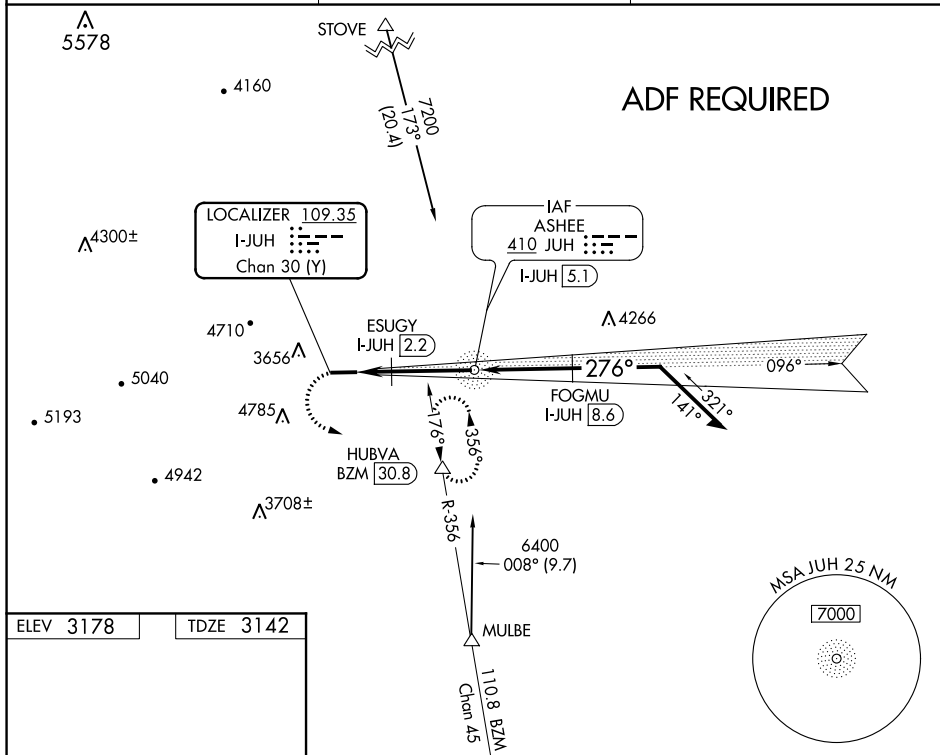


LOC/DME I-JUH 109.35 Chan 30 (Y)	APP CRS 276°	Rwy Idg 5002 TDZE 3142 Apt Elev 3178
--	------------------------	---

LOC RWY 28
ASHE COUNTY (GEV)

reduction below $\frac{3}{4}$ SM NA. VDP NA when using Marion/Wytheville altimeter setting. When local altimeter setting not received, use Marion/Wytheville altimeter setting and increase all MDA 160 feet and S-28 Cats C/D visibility $\frac{1}{2}$ mile.

AWOS-3 120.675	ATLANTA CENTER 125.15 263.0	UNICOM 122.8 (CTAF) 0
--------------------------	---------------------------------------	--



5002 X 75

28

1.8% UP

276° 4.3 NM from FAF

hdg 096°

BZM R-356

HUBVA

JUH NDB I-JUH 5.1

6100

Remain within 10 NM

096°

FOGMU I-JUH 8.6

276° 5700

276°

4700

ESUGY I-JUH 2.2

I-JUH 3.1

3.45°

TCH 48

1.3

1 NM

2 NM

3.5 NM

VGSI and descent angles not coincident (VGSI Angle 3.00/TCH 48).

CATEGORY	A	B	C	D
S-28	3860-1½	718 (700-1½)	3860-2	718 (700-2)
C CIRCLING	4240-1½	1062 (1100-1½)	NA	

REIL Rwy 28

MIRL Rwy 10-28