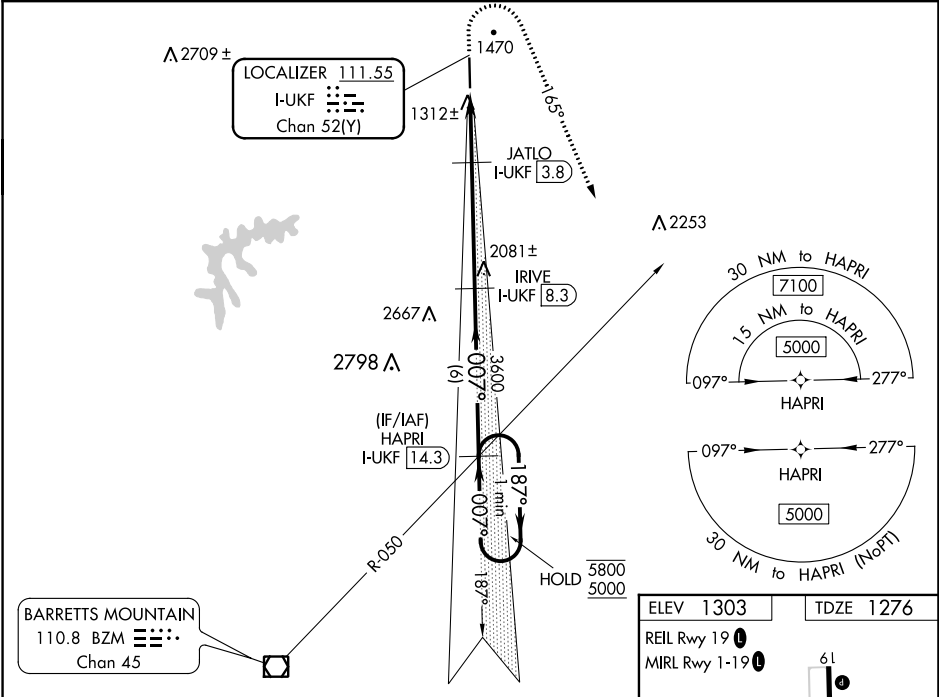


LOC/DME I-UKF <b>111.55</b> Chan <b>52(Y)</b>	APP CRS <b>007°</b>	Rwy Idg TDZE <b>6200</b> <b>1276</b> Apt Elev <b>1303</b>
---	------------------------	--

ILS Z or LOC Z RWY 1  
WILKES COUNTY (UKF')

DME required. RNAV 1-GPS required.	MALSR 	MISSED APPROACH: Climb to 1740 then climbing right turn to 5000 heading 165° and BZM VOR/DME R-050 direct HAPRI/ I-UKF 14.3 DME and hold, continue climb-in-hold to 5000.
------------------------------------	-----------	---

AWOS-3 <b>126.625</b>	ATLANTA CENTER <b>125.15 263.0</b>	UNICOM <b>122.7 (CTAF)</b>
--------------------------	---------------------------------------	-------------------------------



One Minute Holding Pattern	HAPRI I-UKF 14.3	IRIVE I-UKF 8.3	JATLO I-UKF 3.8	BZM R-050 HAPRI I-UKF 14.3
5800 ← 187°	5000 → 007°	3600	2160	*LOC only.
GS 3.00° TCH 59	6 NM	4.5 NM	1.7 NM	1 NM
CATEGORY	A	B	C	D
S-ILS 1	1476-½ 200 (200-½)			
S-LOC 1	1640-½	364 (400-½)	1640-5/8	364 (400-5/8)
CIRCLING	1800-1 497 (500-1)	1880-1 577 (600-1)	1880-1½ 577 (600-1½)	2240-3 937 (1000-3)

