

VOR/DME FAY	APP CRS	Rwy Idg	5006
108.8	152°	TDZE	132
Chan 25		Apt Elev	132

VOR/DME RWY 15

CURTIS L BROWN JR FIELD (EYF)

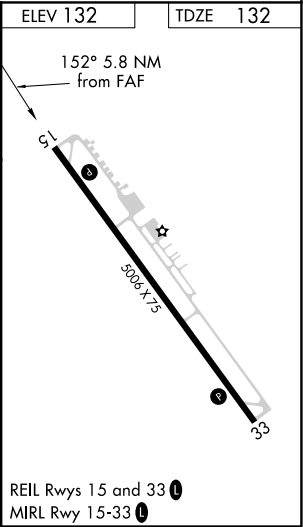
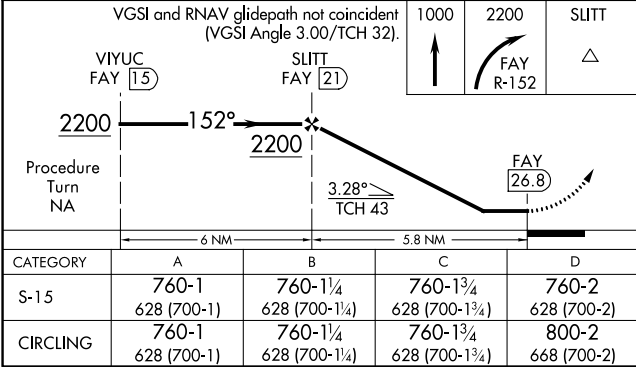
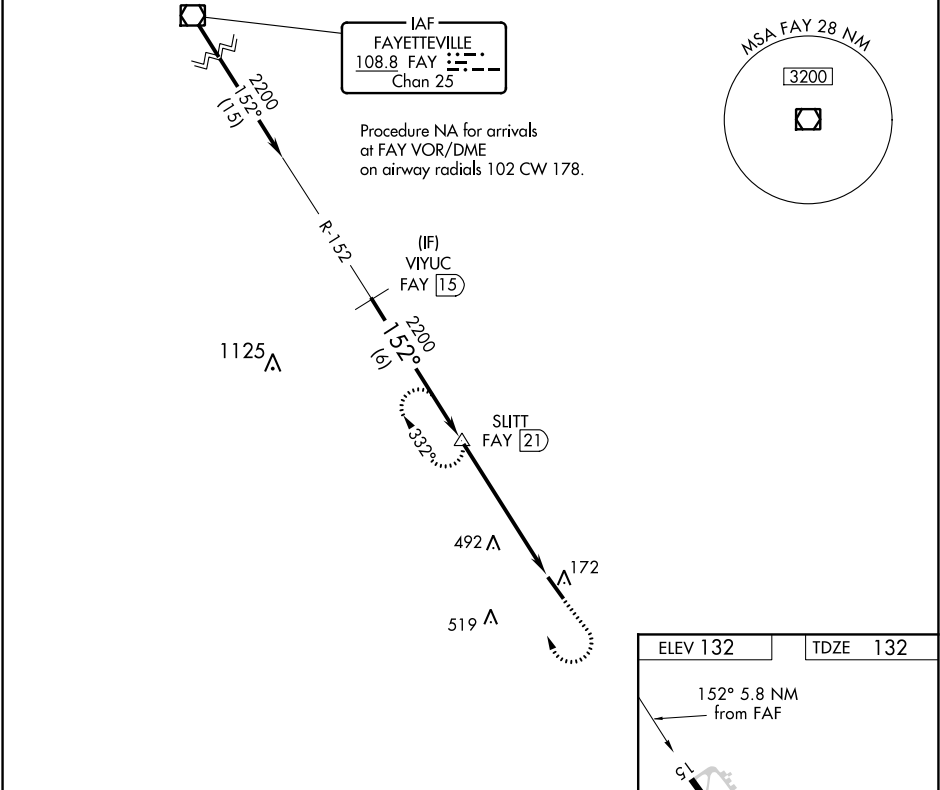
▼

▲

Visibility reduction by helicopters NA. When local altimeter setting not received, use Fayetteville altimeter setting and increase all MDA 80 feet and increase S-15 visibility Cats C and D ¼ mile and increase Circling visibility Cat C ¼ mile and Cat D ½ mile.

MISSED APPROACH: Climb to 1000 then climbing right turn to 2200 on FAY R-152 to SLITT/21 DME and hold.

AWOS-3P 119.475	FAYETTEVILLE APP CON 133.0 290.25	UNICOM 122.8 (CTAF) 0
--------------------	--------------------------------------	--------------------------



SE-2, 03 DEC 2020 to 31 DEC 2020

SE-2, 03 DEC 2020 to 31 DEC 2020