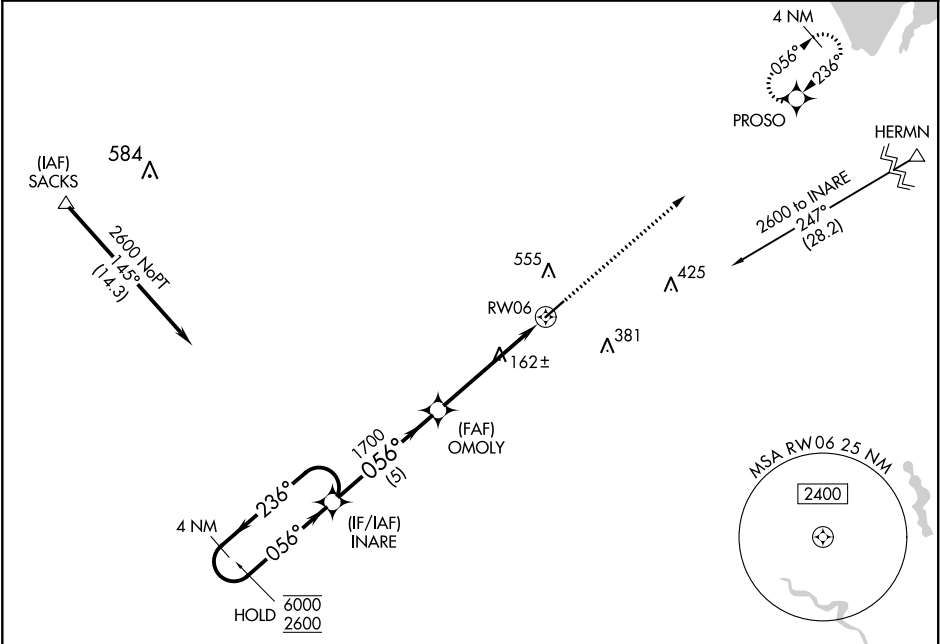


WAAS CH <b>49018</b> <b>W06A</b>	APP CRS <b>056°</b>	Rwy Idg TDZE <b>53</b> Apt Elev <b>56</b>	<b>5000</b>
--	------------------------	---	-------------

RNAV (GPS) RWY 6  
SUMMERVILLE (DYB)

RNP APCH.	MISSED APPROACH: Climb to 2600 direct PROSO and hold.
-----------	---

AWOS-3 <b>119.575</b>	CHARLESTON APP CON <b>120.7 306.925</b>	UNICOM <b>123.0 (CTAF) 0</b>
--------------------------	--	---------------------------------



ELEV 56		TDZE 53	
4 NM Holding Pattern		2600 PROSO	
6000 ← 236°		* LNAV only.	
2600 → 056°		1700	
GP 3.00°		* 1.4 NM to RWY 06	
TCH 40		RWY 06	
5 NM		3.7 NM	
1.4 NM		0.3 NM	
CATEGORY	A	B	D
LPV DA	253-¾	200 (200-¾)	NA
LNAV/VNAV DA	477-1¼	424 (500-1¼)	NA
LNAV MDA	540-1	487 (500-1)	NA
CIRCLING	860-1	804 (900-1)	NA

SE-2, 03 DEC 2020 to 31 DEC 2020

SE-2, 03 DEC 2020 to 31 DEC 2020