

WAAS CH 90103 W05A	APP CRS 046°	Rwy Idg TDZE 368 Apt Elev 368
--	------------------------	---


RNAV (GPS) RWY 5

TRIANGLE NORTH EXECUTIVE (LHZ)

▼ For uncompensated Baro-VNAV systems, LNAV/VNAV NA below -15°C (5°F) or above 41°C (105°F). DME/DME RNP-0.3 NA. When local altimeter setting not received, use Raleigh-Durham altimeter setting and increase all DA 65 feet and all MDA 80 feet;

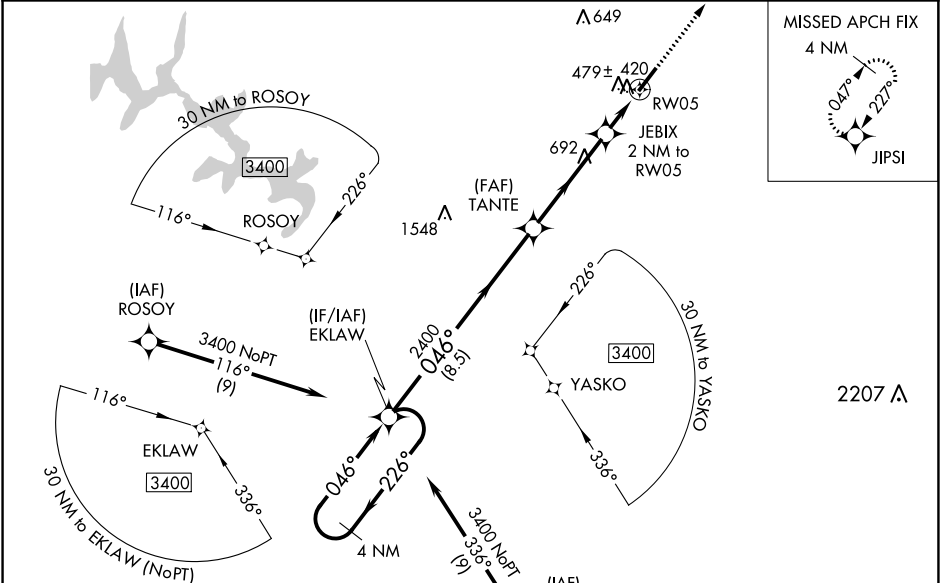
▲ LNAV/VNAV all Cats visibility ⅓ mile and LNAV Cats C/D visibility ¼ mile. For inop MALSR, increase LNAV/VNAV all Cats visibility to ⅔ mile and LNAV Cats C/D visibility to 1 mile. For inop MALSR when using Raleigh-Durham altimeter setting, increase LPV all Cats visibility to ⅔ mile. Baro-VNAV and VDP NA with Raleigh-Durham altimeter setting.

MALSR



MISSED APPROACH:
Climb to 2600 direct JIPSI and hold.

AWOS-3 118.325	RALEIGH APP CON 125.3 353.675	UNICOM 123.0 (CTAF) 0
--------------------------	---	---------------------------------



4 NM Holding Pattern EKLAW

3400 ← 226° → 046° →

GP 3.00° TCH 39

2400

TANTE 2400

JEBIX 2 NM to RW05

*1.1 NM to RW05

RW05

*1040

8.5 NM

4.3 NM

0.9 NM

1.1 NM

2600 JIPSI

*LNAV only

ELEV 368

TDZE 368

046° to RW05

5498 x 100

0.7% UP

MIRL Rwy 5-23

REIL Rwy 23

CATEGORY	A	B	C	D
LPV DA		568-½	200 (200-½)	
LNAV/VNAV DA		640-½	272 (300-½)	
LNAV MDA	740-½	372 (400-½)	740-⅝	372 (400-⅝)
CIRCLING	800-1 432 (500-1)	820-1 452 (500-1)	820-1½ 452 (500-1½)	920-2 552 (600-2)