

DME required.

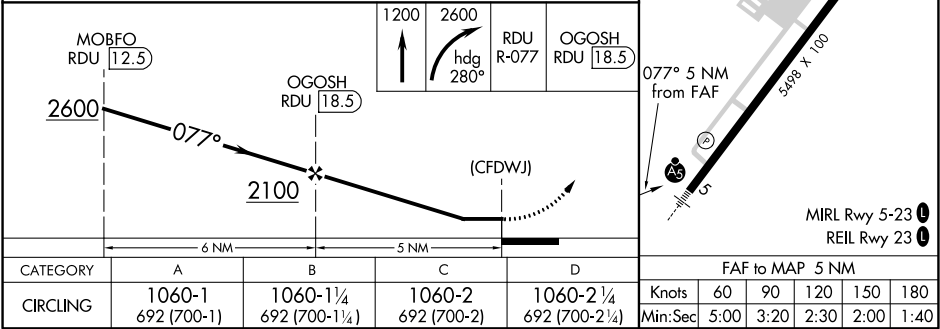
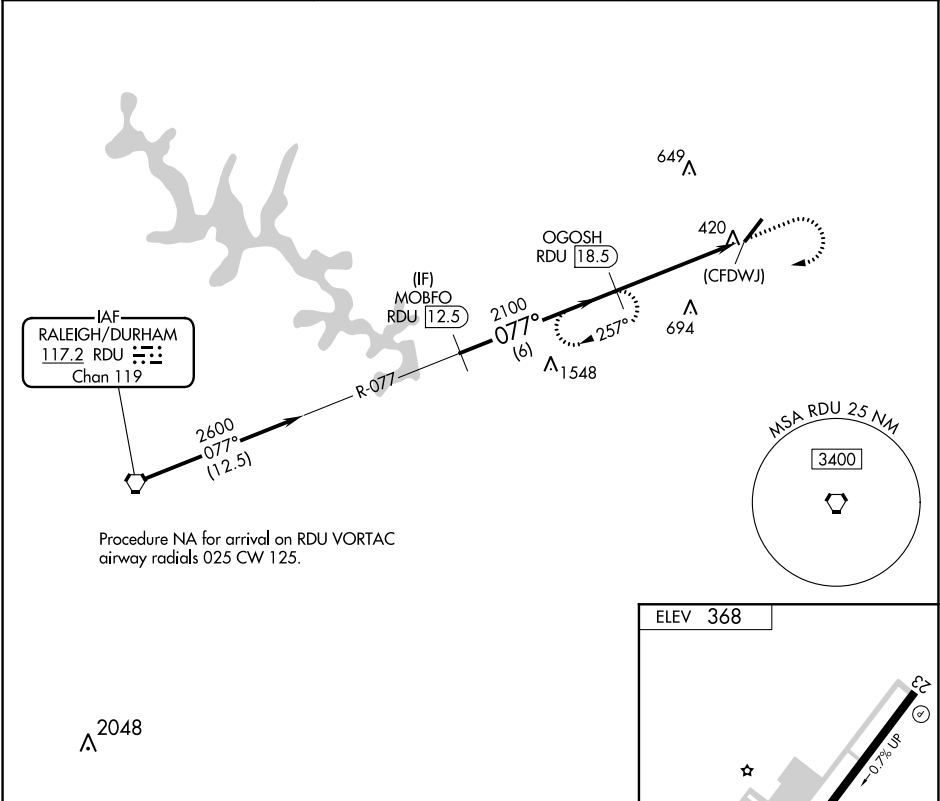
▼

▲

When local altimeter setting not received, use Raleigh-Durham Intl altimeter setting and increase all MDA 80 feet and Cats C/D visibility ¼ SM.

MISSED APPROACH: Climb to 1200 then climbing right turn to 2600 on heading 280° and on RDU VORTAC R-077 to OGOSH/RDU 18.5 DME and hold.

AWOS-3 118.325	RALEIGH APP CON 125.3 353.675	UNICOM 123.0 (CTAF) 0
-------------------	----------------------------------	--------------------------



SE-2, 03 DEC 2020 to 31 DEC 2020

SE-2, 03 DEC 2020 to 31 DEC 2020