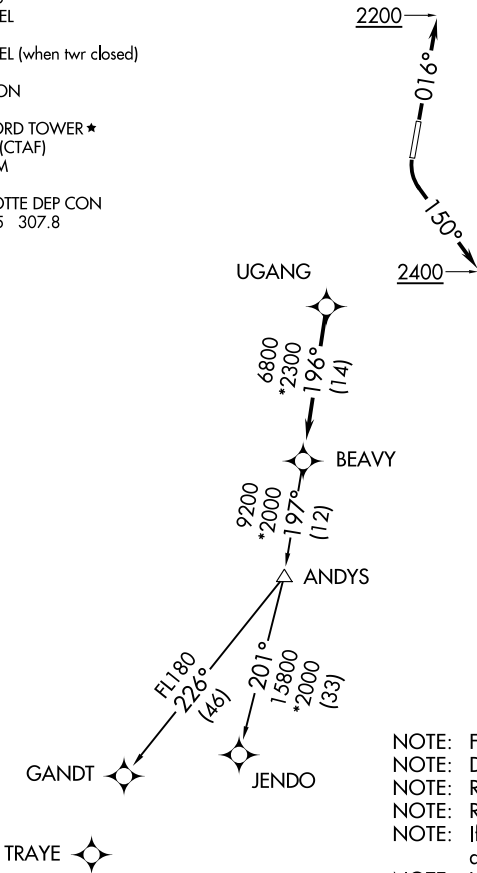


ATIS ★
133.675
CLNC DEL
118.55
CLNC DEL (when twr closed)
127.25
GND CON
121.85
CONCORD TOWER ★
134.65 (CTAF)
UNICOM
122.95
CHARLOTTE DEP CON
128.325 307.8

TOP ALTITUDE:
3000



TAKEOFF MINIMUMS
Rwy 2: Standard.
Rwy 20: Standard with minimum climb
of 320' per NM to 2400.

- NOTE: For turbojets only.
NOTE: DME/DME/IRU or GPS required.
NOTE: RNAV 1.
NOTE: RADAR required.
NOTE: If unable to accept climb rates,
advise ATC on initial contact.
NOTE: Upon reaching 10000 MSL, accelerate to
and maintain 280K, if unable advise ATC.
NOTE: Transponder code will be issued via PDC
or Charlotte CLNC DEL.

NOTE: Chart not to scale.

T

DEPARTURE ROUTE DESCRIPTION

TAKEOFF RWY 2: Climb heading 016° to 2200, then...
TAKEOFF RWY 20: Climbing left turn heading 150° to 2400, then...

...on heading assigned by ATC, expect RADAR vectors to UGANG, then on
track 196° to BEAVY. Then on assigned transition. Maintain 3000, expect clearance
to filed altitude within 10 minutes after departure.

GANDT TRANSITION (BEAVY5.GANDT)
JENDO TRANSITION (BEAVY5.JENDO)

SE-2, 03 DEC 2020 to 31 DEC 2020

SE-2, 03 DEC 2020 to 31 DEC 2020