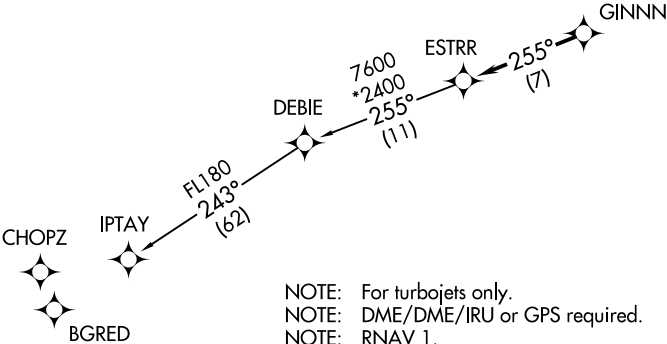
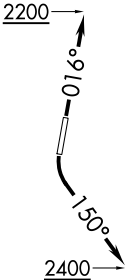


ATIS★
133.675
CLNC DEL
118.55
CLNC DEL (when twr closed)
127.25
GND CON
121.85
CONCORD TOWER★
134.65 (CTAF)
UNICOM
122.95
CHARLOTTE DEP CON
128.325 307.8

TOP ALTITUDE:
3000

TAKEOFF MINIMUMS
Rwy 2: Standard.
Rwy 20: Standard with minimum climb of 320' per NM to 2400.



- NOTE: For turbojets only.
NOTE: DME/DME/IRU or GPS required.
NOTE: RNAV 1.
NOTE: RADAR required.
NOTE: If unable to accept climb rates, advise ATC on initial contact.
NOTE: Upon reaching 10000 MSL, accelerate to and maintain 280K, if unable advise ATC.

NOTE: Chart not to scale.



DEPARTURE ROUTE DESCRIPTION

TAKEOFF RWY 2: Climb heading 016° to 2200, thence. . .
TAKEOFF RWY 20: Climbing left turn heading 150° to 2400, thence. . .

. . . on heading assigned by ATC, expect RADAR vectors to GINNN, then on track 255° to ESTRR, then on IPTAY transition. Maintain 3000, expect clearance to filed altitude within 10 minutes after departure.

IPTAY TRANSITION (ESTRR4.IPTAY)