

DME or RADAR required for LOC only.

▼

NA

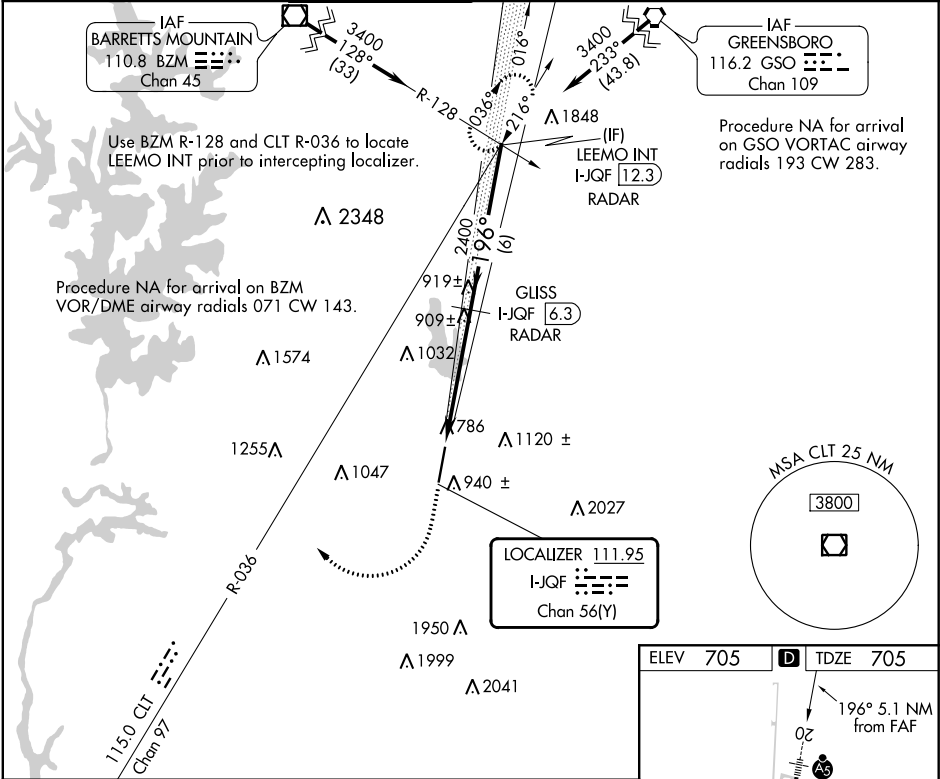
For inop ALS, increase S-LOC 20 Cat D visibility to 1 3/8 SM.

MALS R

AS

MISSED APPROACH: Climb to 1200 then climbing right turn to 3400 on heading 020° and CLT VOR/DME R-036 to LEEMO INT/I-JQF 12.3 DME/RADAR and hold.

ATIS★	CHARLOTTE APP CON	CONCORD TOWER★	GND CON	CLNC DEL	CLNC DEL	UNICOM
133.675	128.32 307.8	134.65 (CTAF)0	121.85	118.55	127.25 (when twr closed)	122.95



1200	3400	CLT R-036	LEEMO INT	GLISS I-JQF [6.3] RADAR	LEEMO INT I-JQF [12.3] RADAR
* LOC only.					
* I-JQF [2.5]					
I-JQF [1.2]					
2400					
196°					
3400					
GS 3.00° TCH 44					
CATEGORY	A	B	C	D	
S-ILS 20	905-1/2 200 (200-1/2)				
S-LOC 20	1160-1/2 455 (500-1/2)	1160-7/8 455 (500-7/8)	1160-1 455 (500-1)		
CIRCLING	1300-1 595 (600-1)	1480-2 775 (800-2 1/4)	1480-2 775 (800-2 1/4)		

