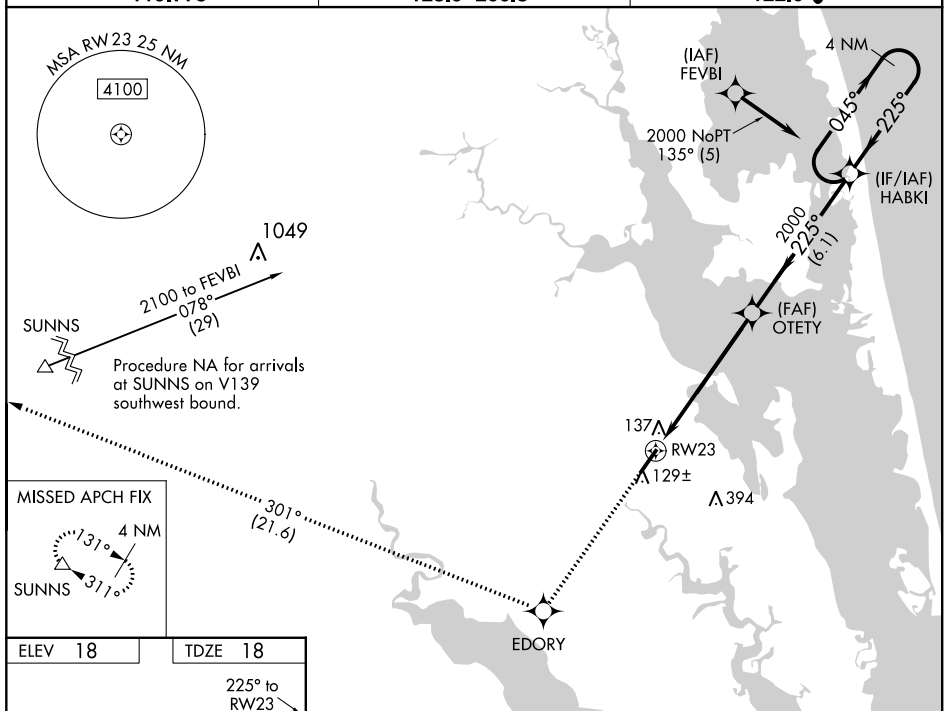


RNAV (GPS) RWY 23
CURRITUCK COUNTY RGNL (ONX)

T For uncompensated Baro-VNAV systems, LNAV/VNAV NA below -15°C (5°F) or above 49°C (120°F). Rwy 23 helicopter visibility reduction below $\frac{3}{4}$ SM NA.

MISSED APPROACH: Climb to 2000
direct EDORY and right turn on track
301° to SUNNS and hold.

CTAF
122.9 **L**

RWY 23

5500 X 150

REIL Rwy 5-23
MIRL Rwy 5-23

CATEGORY	A	B	C	D
LPV DA	384-1¼	366 (400-1¼)		
LNAV/VNAV DA	424-1½	406 (500-1½)		
LNAV MDA	400-1	382 (400-1)	400-1¼	382 (400-1¼)
CIRCLING	440-1 422 (500-1)	480-1 462 (500-1)	480-1½ 462 (500-1½)	580-2 562 (600-2)

SE-2, 03 DEC 2020 to 31 DEC 2020

SE-2. 03 DEC 2020 to 31 DEC 2020