

WAAS CH 49008 W05A	APP CRS 045°	Rwy Idg TDZE Apt Elev	5500 18 18
--	------------------------	-----------------------------	---------------------------------------

RNAV (GPS) RWY 5

CURRITUCK COUNTY RGNL (ONX)

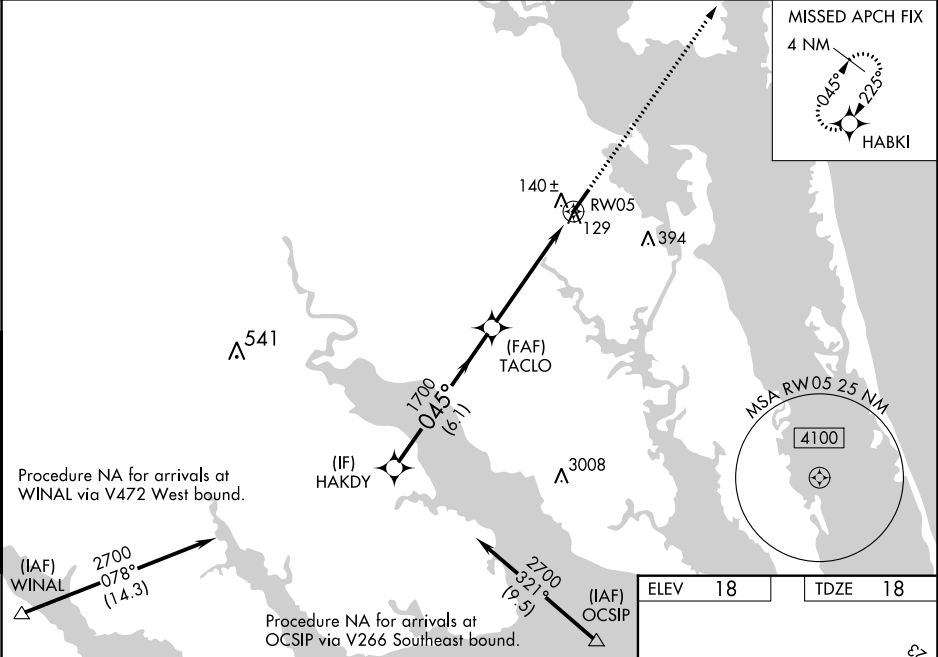
▼

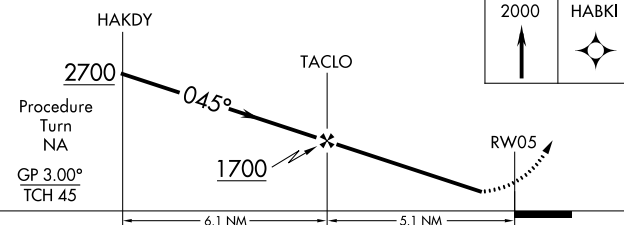

▲

Baro-VNAV NA when using Oceana NAS/Apollo Soucek altimeter setting. For uncompensated Baro-VNAV systems, LNAV/VNAV NA below -15°C (5°F) or above 49°C (120°F). DME/DME RNP-0.3 NA. Visibility reduction by helicopters NA. Procedure NA when tethered balloon located approximately 11.4 NM southwest of airport is flying. When local altimeter setting not received, use Oceana NAS/Apollo Soucek altimeter setting and increase all DA 59 feet, and all MDA 60 feet; increase LNAV Cat. C and D visibility ¼ mile.

MISSED APPROACH:
Climb to 2000 direct HAKBI and hold.

AWOS-3 119.775	OCEANA APP CON 123.9 266.8	CTAF 122.90
--------------------------	--------------------------------------	-----------------------



 <div>2000 ↑</div> <div>HABKI </div> <p>Procedure Turn NA GP 3.00° TCH 45</p> <p>HAKDY 2700 0.45° TACLO 1700 RW05</p> <p>6.1 NM 5.1 NM</p>					CATEGORY				A		B		C		D	
LPV DA		343-1¼ 325 (400-1¼)														
LNAV/VNAV DA		410-1½ 392 (400-1½)														
LNAV MDA		400-1 382 (400-1)										400-1¼ 382 (400-1¼)				
CIRCLING		440-1 422 (500-1)		480-1 462 (500-1)		480-1½ 462 (500-1½)		580-2 562 (600-2)								

