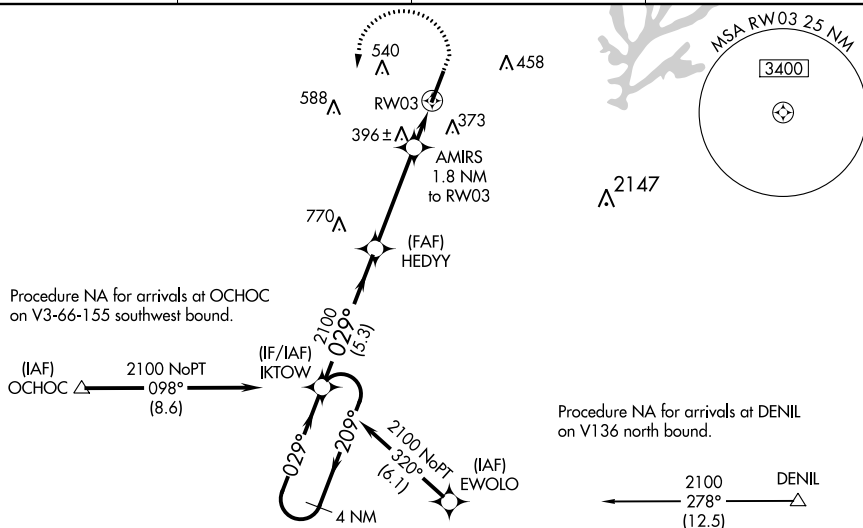


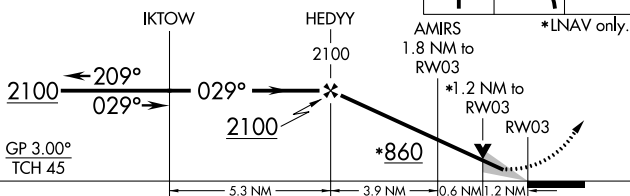
RNAV (GPS) RWY 3
RALEIGH EXECUTIVE JETPORT AT SANFORD-LEE COUNTY (TTA)


MISSED APPROACH:
Climb to 1300 then
climbing left turn to
2100 direct IKTOW
and hold.

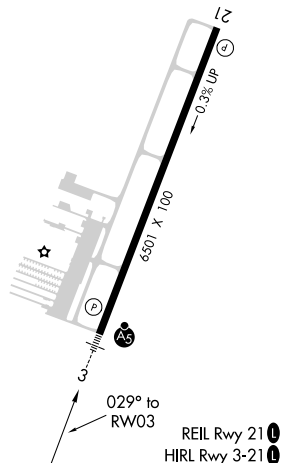
GCO
135.075



4 NM
Holding Pattern



CATEGORY		A	B	C	D
LPV	DA	446-1½ 200 (200-½)			
INAV/ VNAV	DA	634-¾ 388 (400-¾)			
INAV	MDA	660-½	414 (500-½)	660-¾	414 (500-¾)
 CIRCLING		760-1 514 (600-1)	820-1 574 (600-1)	840-1½ 594 (600-1½)	960-2¼ 714 (800-2¼)



35°35'N-79°06'W

RNAV (GPS) RWY 3