

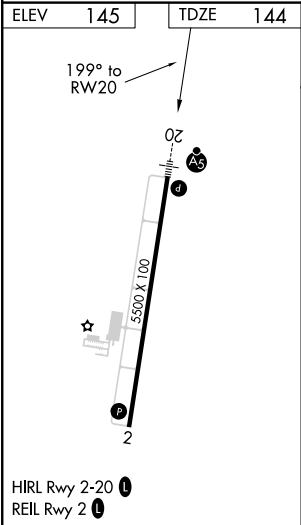
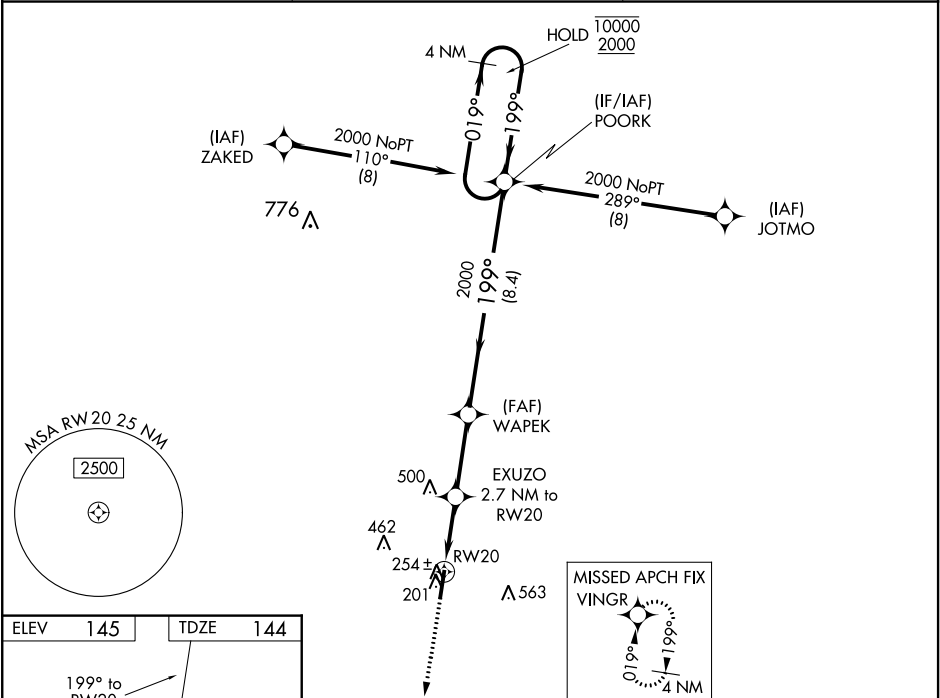
WAAS CH 72725 W20A	APP CRS 199°	Rwy Idg 5500 TDZE 144 Apt Elev 145
--	------------------------	---

RNAV (GPS) RWY 20

HALIFAX-NORTHAMPTON RGNL (IXA)

RNP APCH.		MALSRL	MISSED APPROACH: Climb to 2000 direct VINGR and hold.
For uncompensated Baro-VNAV systems, LNAV/VNAV NA below -1.5°C or above 54°C. Circling NA east of Rwy 2-20. For inop ALS increase LNAV/VNAV visibility all Cats to ¾ SM and LNAV Cats C/D to 1 SM.			

AWOS-3PT 119.975	WASHINGTON CENTER 132.025 290.425	UNICOM 123.075 (CTAF) 0
----------------------------	---	-----------------------------------



2000 VINGR		VGSI and RNAV glidepath not coincident. (VGSI Angle 3.00/TCH 24)		4 NM Holding Pattern	
*LNAV only.		EXUZO 2.7 NM to RW20	WAPEK 2000	POORK	
*1.1 NM to RW20		*1040		GP 3.00° TCH 51	
1.1		1.6	3 NM	8.4 NM	
CATEGORY	A	B	C	D	
LPV DA		344-½	200 (200-½)		
LNAV/VNAV DA		420-½	276 (300-½)		
LNAV MDA	520-½	376 (400-½)	520-⅝	376 (400-⅝)	
CIRCLING	560-1 415 (500-1)	600-1 455 (500-1)	780-1¾ 635 (700-1¾)	860-2¼ 715 (800-2¼)	