

APP CRS

001°

Rwy Idg

3000

TDZE

12

Apt Elev

12

RNAV (GPS) RWY 3

FIRST FLIGHT(F F A)

▼

DME/DME RNP-0.3 NA. Procedure NA at night.  
Rwy 3 helicopter visibility reduction below 1 SM NA.

MISSED APPROACH: Climbing left turn to 3000 direct OCSIP and hold.

AWOS-3

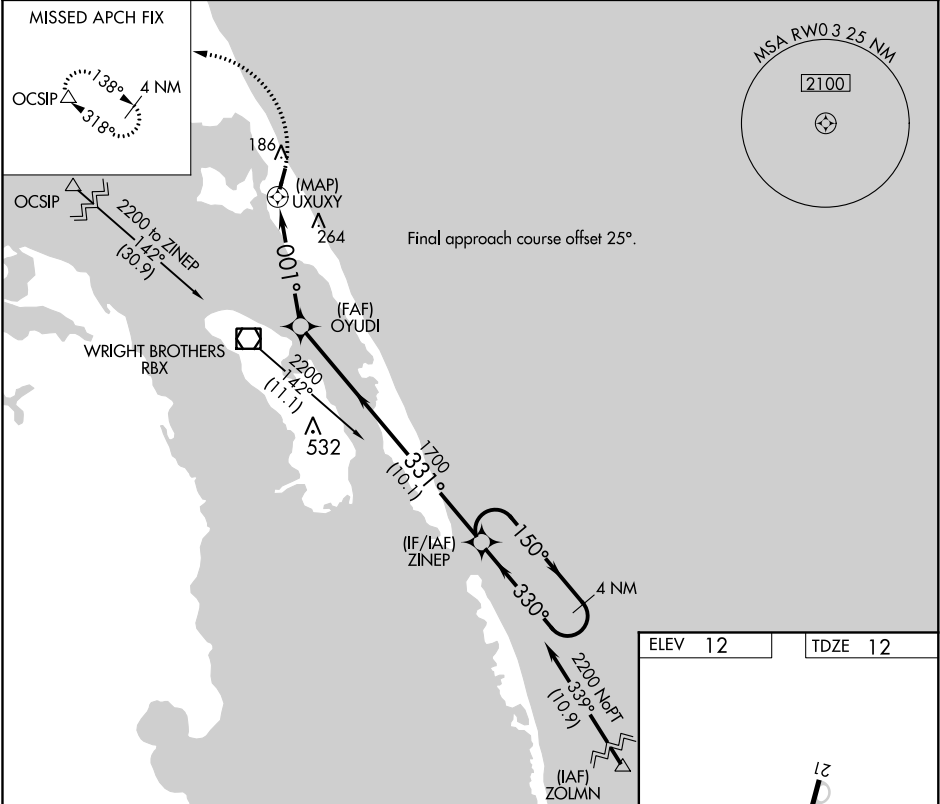
118.075

CHERRY POINT APP CON

124.725 350.35

CTAF

122.9



4 NM Holding Pattern

ZINEP

2200

150°

330°

OYUDI

330°

1700

3.00° TCH 40

001°

UXUXY

3000

OCSIP

10.1 NM

4.7 NM

0.5

CATEGORY	A	B	C	D
LNAV MDA	480-1	468 (500-1)	NA	
CIRCLING	520-1 508 (600-1)	540-1 528 (600-1)	NA	

ELEV 12

TDZE 12

21

3000 X 60