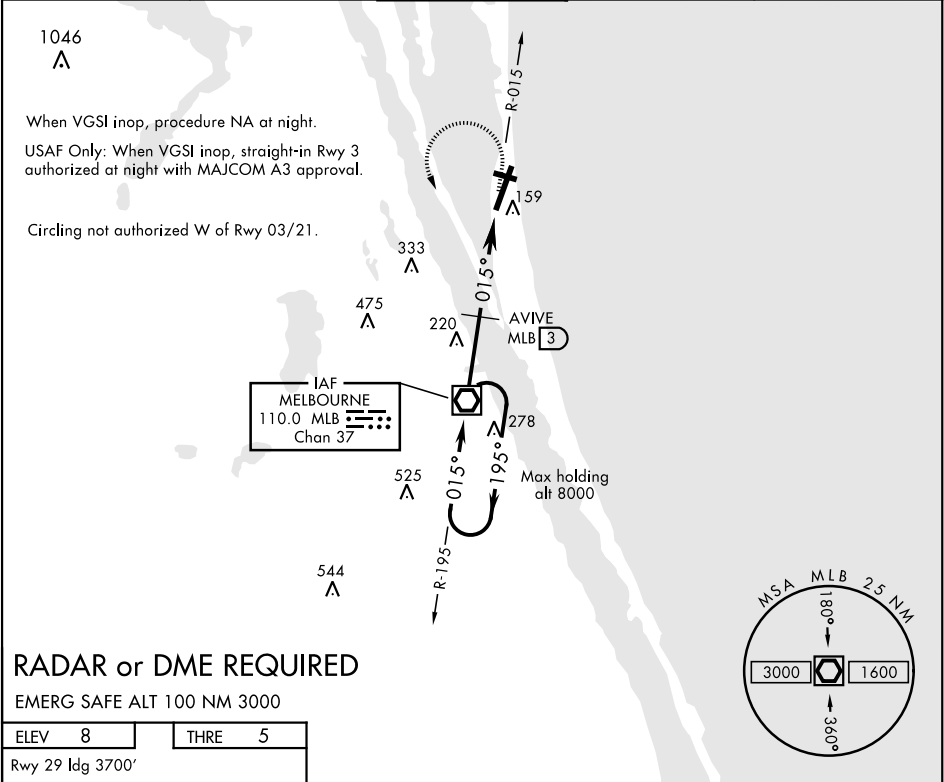


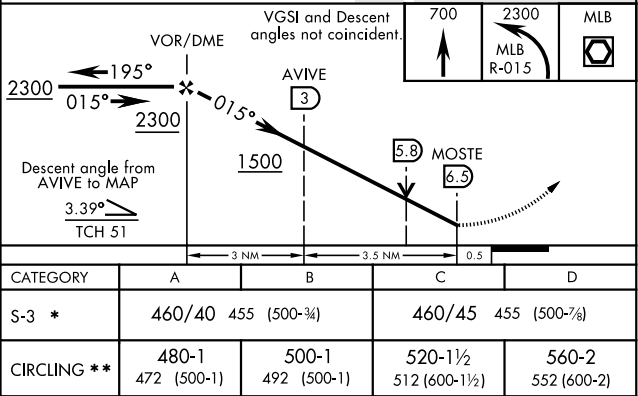
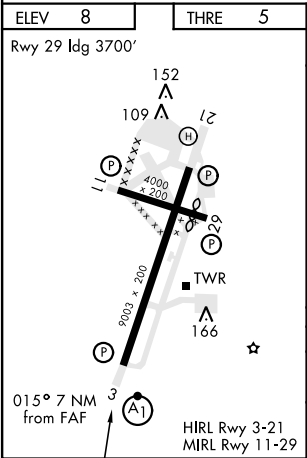
VOR/DME RWY 3

VOR/DME MLB 110.0 Chan 37	APCH CRS 015°	Rwy Idg THRE 5 Arpt Elev 8	AL-38 [USAF]	PATRICK AFB (KCOF)
▼ * When ALS inop, increase CAT AB RVR to 55 and vis to 1 mile, CAT CD vis to 1½ miles. ** CAUTION: When Rwy 29 VGSI inop, circling to Rwy 29 not authorized at night.			ALSF-1 	MISSED APPROACH: Climb to 700, then turn left to intercept MLB VOR/DME R-015 then direct MLB. Maintain 2300 and hold. Climb in hold required.
ATIS ★ 119.175 273.5	ORLANDO APP CON 132.65 281.425	PATRICK TOWER ★ 133.75 269.375	GND CON 124.35 335.8	CLNC DEL 118.4 289.4



RADAR or DME REQUIRED

EMERG SAFE ALT 100 NM 3000



VOR/DME RWY 3

SE-3, 03 DEC 2020 to 31 DEC 2020

SE-3, 03 DEC 2020 to 31 DEC 2020