

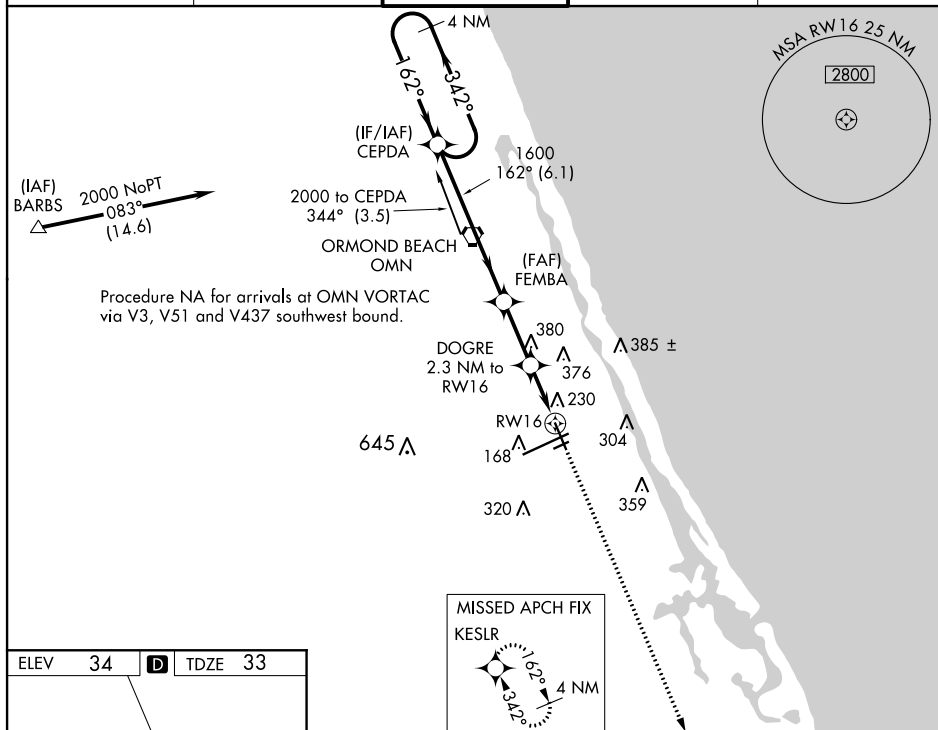
WAAS CH <b>45529</b> <b>W16A</b>	APP CRS <b>162°</b>	Rwy Idg <b>5969</b> TDZE <b>33</b> Apt Elev <b>34</b>
--	------------------------	---

RNAV (GPS) RWY 16  
DAYTONA BEACH INTL (DAB)

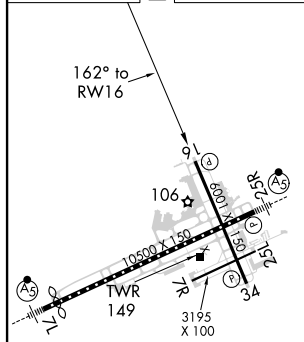
**T** Baro-VNAV NA below -15° C (5° F).  
DME/DME RNP-0.3 NA.  
Helicopter visibility reduction below  $\frac{3}{4}$  SM NA.

**MISSED APPROACH:** Climb to 1700 direct KESLR and hold.

ATIS 132.875	DAYTONA APP CON 125.8 269.075	DAYTONA TOWER 120.7 257.8	GND CON 121.9 348.6	CLNC DEL 119.3
-----------------	----------------------------------	------------------------------	------------------------	-------------------



ELEV	34	<b>D</b>	TDZE	33
------	----	----------	------	----



TDZ/CL Rwy 7L  
HIRL Rwy 7L-25R  
REIL Rwys 7R, 16, 25L and 34  
MIRL Rwys 7R-25L and 16-34

4 NM Holding Pattern

CEPDA

FEMBA

DOGRE 2.3 NM to RW16

2000

←342°

162°→

162°

1600

GP 3.00° TCH 45

800

6.1 NM

2.5 NM

0.9 NM

1.3 NM

1.3 NM to RW16

RW16

1700 KESLR

\*LNAV only.

CATEGORY	A	B	C	D
LPV DA	358-1¼		325 (400-1¼)	
LNAV/VNAV DA	479-1½		446 (500-1½)	
LNAV MDA	500-1	467 (500-1)	500-1¼ 467 (500-1¼)	500-1½ 467 (500-1½)
<b>C</b> CIRCLING	540-1½	506 (600-1½)	680-1¾ 646 (700-1¾)	700-2 666 (700-2)