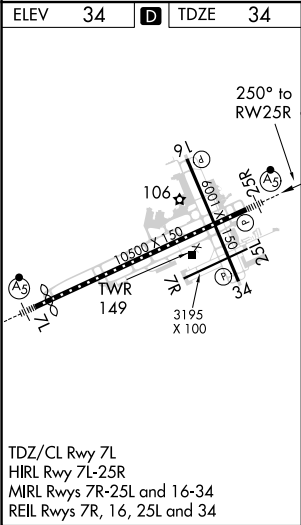
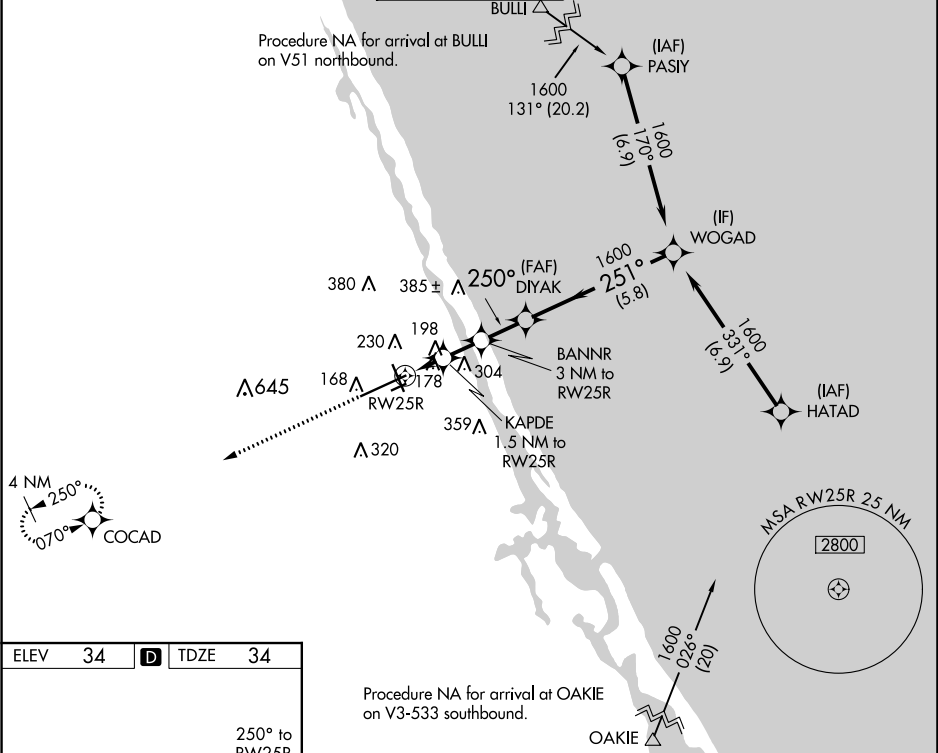


WAAS CH 77533 W25A	APP CRS 250°	Rwy Idg 10293 TDZE 34 Apt Elev 34
--	------------------------	--

RNAV (GPS) RWY 25R

DAYTONA BEACH INTL (DAB)

DME/DME RNP-0.3 NA.		MALSRR 	MISSED APPROACH: Climb to 1700 direct COCAD and hold.	
ATIS 132.875	DAYTONA APP CON 125.8 269.075	DAYTONA TOWER 120.7 257.8	GND CON 121.9 348.6	CLNC DEL 119.3



1700 COCAD		VGSIs and descent angles not coincident (VGSi Angle 3.00/TCH 72)	
RW25R		KAPDE 1.5 NM to RW25R	DIYAK 3.00° TCH 55
560		1040	1600
1.5 NM		1.5 NM	1.8 NM
CATEGORY		A	B
LP MDA		440-½	407 (500-½)
LNAV MDA		460-½	426 (500-½)
C CIRCLING		540-1	506 (600-1)
		C	D
		440-¾	407 (500-¾)
		460-¾	426 (500-¾)
		680-1¾	700-2
		646 (700-1¾)	666 (700-2)