

WAAS
CH **72624**
W05A

APP CRS
051°

Rwy Idg **5947**
TDZE **15**
Apt Elev **17**

RNAV (GPS) RWY 5

0

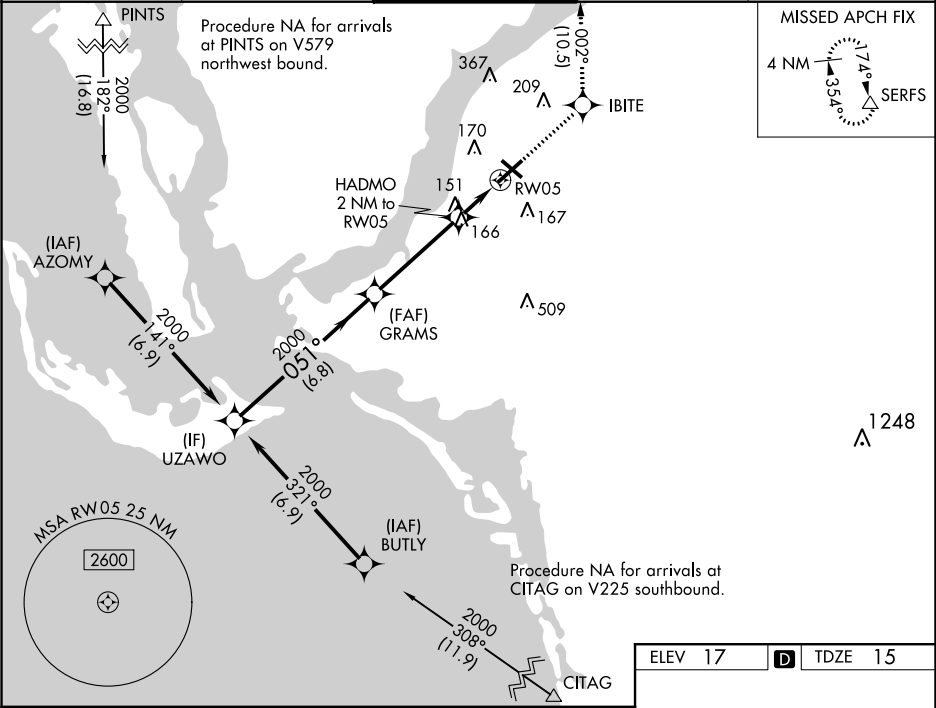
PAGE FIELD (FMY)

RNP APCH.

▼ When Circling to Rwy 31 at night, operational VGSI required, remain on or above VGSI glidepath until threshold. Rwy 5 helicopter visibility reduction below ¾ SM NA.
For uncompensated Baro-VNAV systems, LNAV/VNAV NA below 4°C or above 54°C.

MISSED APPROACH: Climb to 2600 direct IBITE and on track 002° to SERFS and hold.

| | | | | |
|------------------------|--|--|-------------------------|--------------------------|
| ATIS 123.725 | FORT MYERS APP CON ★ 126.8 306.2 | PAGE TOWER ★ 119.0 (CTAF) 0 306.95 | GND CON 121.7 | CLNC DEL 121.7 |
|------------------------|--|--|-------------------------|--------------------------|



| | | | |
|--------------|--|-----------------------|---------|
| ELEV 17 | | D TDZE 15 | |
| 2600 | | IBITE | SERFS |
| ↑ | | ✧ | tr 002° |
| UZAWO | | GRAMS | |
| 2000 | | 2000 | |
| GP 3.00° | | HADMO 2 NM to RW05 | |
| TCH 53 | | *1.1 NM to RW05 | |
| 6.8 NM | | 0.9 NM | |
| A | | B | |
| LPV DA | | 265-¾ 250 (300-¾) | |
| LNAV/VNAV DA | | 317-7/8 302 (300-7/8) | |
| LNAV MDA | | 420-1 405 (500-1) | |
| CIRCLING | | 540-1 523 (600-1) | |
| | | 600-1½ 583 (600-1½) | |
| | | 680-2 663 (700-2) | |