

WAAS CH 63031 W14A	APP CRS 141°	Rwy Idg 4008 TDZE 41 Apt Elev 41
--	------------------------	---

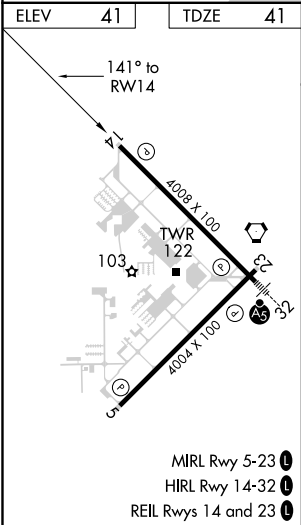
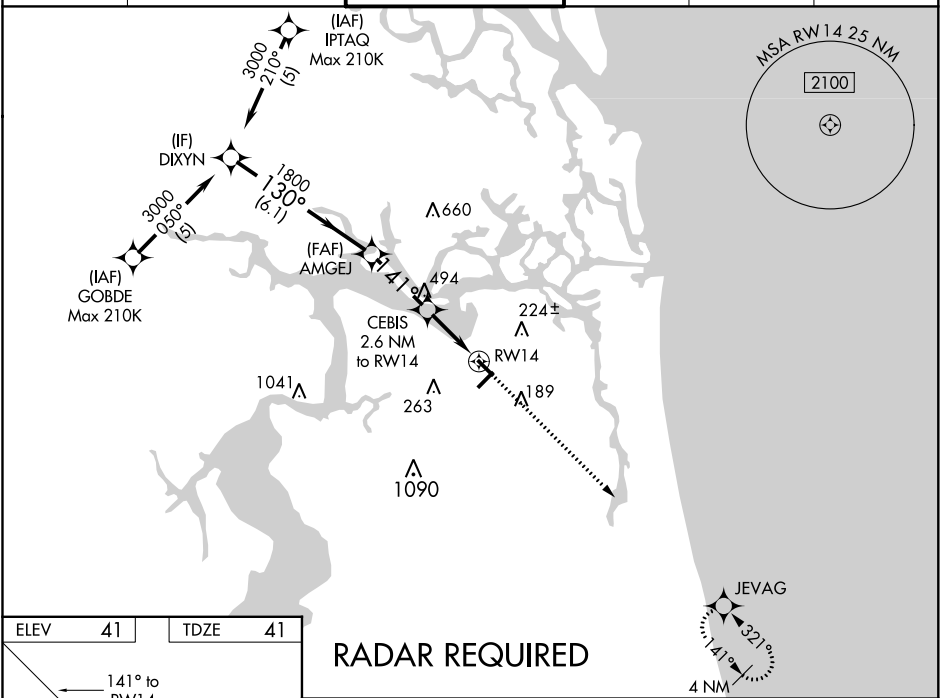
RNAV (GPS) RWY 14

JACKSONVILLE EXECUTIVE AT CRAIG (CRG)

Procedure NA at night. Baro-VNAV NA when using Jacksonville Intl altimeter setting.
For uncompensated Baro-VNAV systems, LNAV/VNAV NA below -3°C (27°F) or above 54°C (130°F). DME/DME RNP-0.3 NA. Helicopter visibility reduction below 1 SM NA. When local altimeter setting not received, use Jacksonville Intl altimeter setting and increase all DA 32 feet and all MDA 40 feet. Increase LNAV/VNAV all Cats visibility to 1¾ and LNAV Cat D visibility to 1½.

MISSED APPROACH:
Climb to 1900 direct JEVAG and hold.

ATIS 125.4	JACKSONVILLE APP CON 124.9 308.4	CRAIG TOWER ★ 132.1 (CTAF) 269.525	GND CON 121.8	CLNC DEL 118.35	UNICOM 122.95
----------------------	--	---	-------------------------	---------------------------	-------------------------



RADAR REQUIRED

DIXYN		AMGEJ		CEBIS 2.6 NM to RW14		RW14	
3000		130°		1800		141°	
GP 3.00°		TCH 44		*900			
6.1 NM		2.8 NM		2.6 NM			
CATEGORY		A		B		C	
LPV DA		293-1		252 (300-1)			
LNAV/VNAV DA		418-1¼		377 (400-1¼)			
LNAV MDA		500-1		459 (500-1)		500-1¾ 459 (500-1¾)	
CIRCLING		500-1 459 (500-2)		580-1 539 (600-2)		580-1½ 539 (600-1½)	
						600-2 559 (600-2)	