

TACAN Chan 19	NIP	APCH CRS 087°	Rwy ldg TDZE Arpt Elev 8006 21 23
-------------------------	-----	-------------------------	---

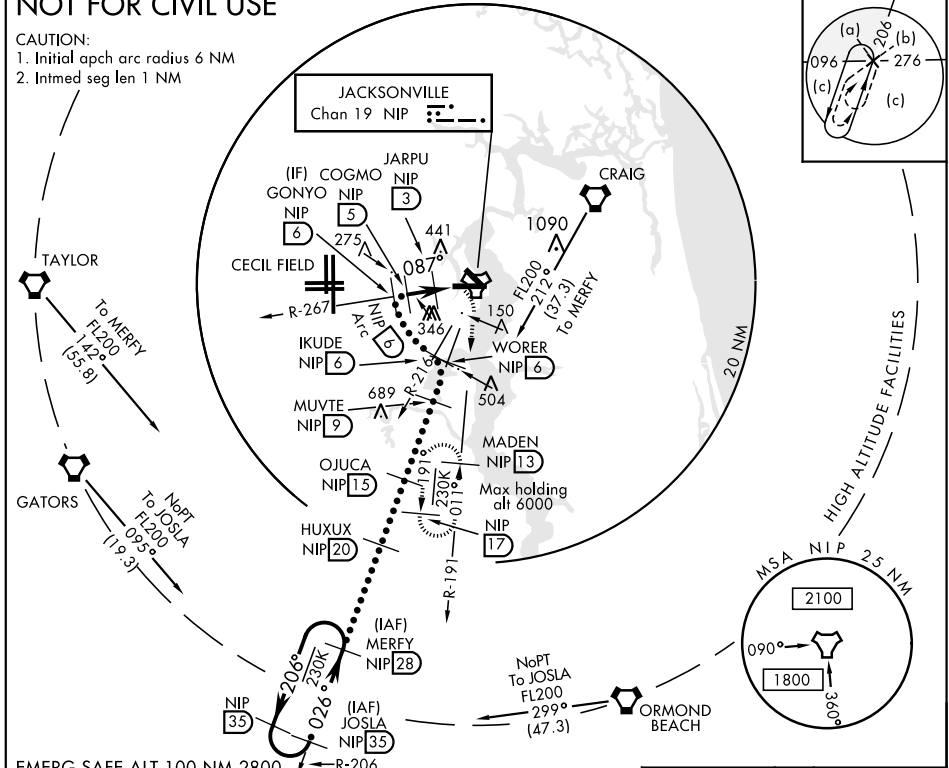
JAL-209 [USN] JACKSONVILLE NAS (TOWERS FIELD) (KNIP)

<p>⚠ * When ALS inop, increase CAT CDE vis to 1½ miles.</p>	<p>ALSF-1 A1</p>	<p>MISSED APPROACH: Climb to 2000 direct NIP TACAN, outbound R-191 to MADEN and hold.</p>
---	----------------------	---

<p>ATIS 124.35 290.425</p>	<p>JACKSONVILLE APP CON 127.775 377.075</p>	<p>NAVY JACKSONVILLE TOWER 125.15 (CTAF) 340.2</p>	<p>GND CON 128.6 336.4</p>	<p>CLNC DEL 134.775 0353.675</p>	<p>ASR/ PAR</p>
---------------------------------------	--	---	---------------------------------------	---	---------------------

NOT FOR CIVIL USE

CAUTION:
1. Initial apch arc radius 6 NM
2. Intmed seg len 1 NM



EMERG SAFE ALT 100 NM 2800			ELEV 23		TDZE 21	
<p>MERFY R-206 HUXUX MUUTE COGMO to MAP 2000 NIP MADEN</p> <p>FL200 13,000 8000 4000 1700 1600 1500 1400 760</p> <p>↑ 2.97° TCH 51</p>			<p>Rwy 10 ldg 8006'</p> <p>Rwy 14 ldg 3244'</p>		<p>087° to TACAN</p> <p>9003 x 200</p> <p>87 167 196</p> <p>Lead-in lights</p>	
CATEGORY	C		D		E	
S-10 *	420-¾		399 (400-¾)			
CIRCLING	560-1½ 537 (600-1½)		800-2½ 777 (800-2½)		920-3 897 (900-3)	