

APCH CRS	Rwy Idg	8006
096°	TDZE	21
	Arpt Elev	23

AL-209 (USN)

JACKSONVILLE NAS (KNIP)

▼ * When ALS inop increase vis to 1 mile.

ALSF-1

MISSED APPROACH: Climb to 600 then climbing right turn to 2000 direct MADEN and hold.

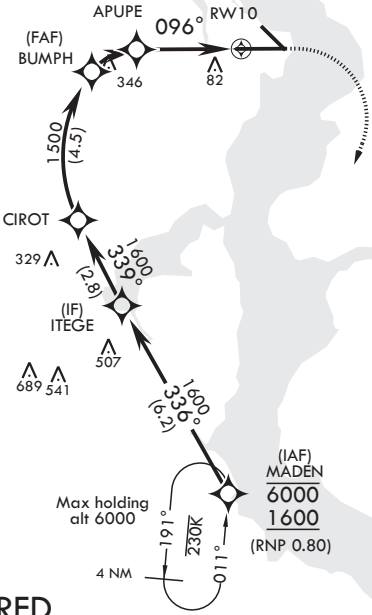
ATIS	APP CON/DEP CON	TOWER	GND CON	CLNC DEL	ASR/PAR
124.35 290.425	127.775 377.075	125.15 (CTAF) 340.2	128.6 336.4	134.775 353.675	

RNP AR APCH

For uncompensated
Baro-VNAV systems,
procedure NA below -15°C
(5°F) or above 54°C (130°F).



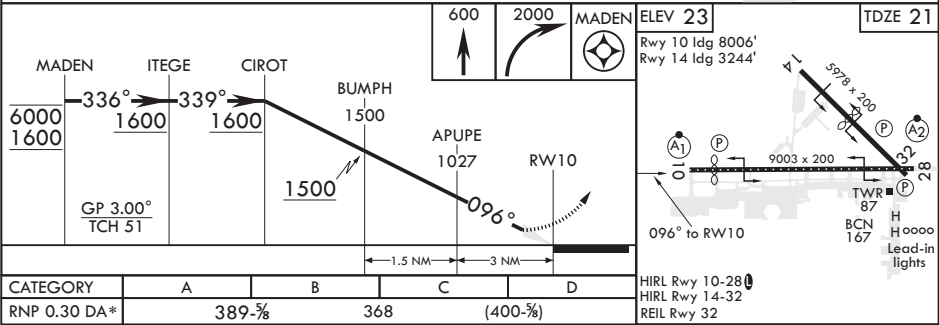
CECIL



1074
A

RF REQUIRED
AUTHORIZATION REQUIRED

306
EMERG SAFE ALT 100 NM 2800



JACKSONVILLE, FLORIDA

30°14'N - 81°41'W

JACKSONVILLE NAS (KNIP)

Amdt 1 05NOV20

RNAV (RNP) Y RWY 10

SE-3, 03 DEC 2020 to 31 DEC 2020

SE-3, 03 DEC 2020 to 31 DEC 2020