

JACKSONVILLE, FLORIDA

RNAV (GPS) Z RWY 10

WAAS CH 42020 W10A	APCH CRS 096°	Rwy ldg TDZE Arpt Elev	8006 21 23
--------------------------	------------------	------------------------------	------------------

AL-209 (USN)

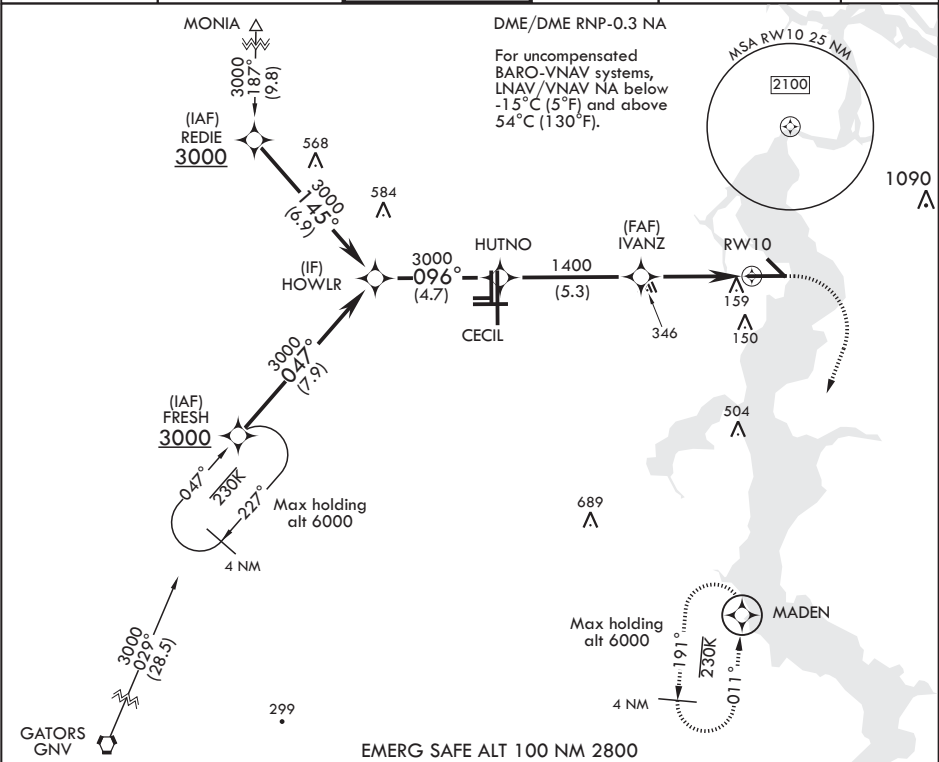
JACKSONVILLE NAS (TOWERS FLD) (KNIP)

▼ * When ALS inop increase CAT ABCD vis to 3/4 mile.
** When ALS inop, increase CAT ABCD vis to 1 mile.
*** When ALS inop increase CAT AB vis to 1 mile; CAT CD vis to 1 1/8 miles.

ALSF-1

MISSED APPROACH: Climb to 600 then climbing right turn to 2000 direct MADEN and hold.

ATIS	APP CON/DEP CON	TOWER	GND CON	CLNC DEL	ASR/PAR
124.35 290.425	127.775 377.075	125.15 (CTAF) 340.2	128.6 336.4	134.775 353.675	



HOWLR HUTNO

3000 096° 3000

GP 3.00° TCH 51

IVANZ

1400

1.2 NM to RWY 10

4.2 NM

RWY 10

↑ LNAV only

600 2000

MADEN

ELEV 23

TDZE 21

Rwy 10 ldg 8006'
Rwy 14 ldg 3244'

CATEGORY	A	B	C	D
LPV DA*	221-1/2	200	(200-1/2)	
LNAV/VNAV DA**	387-3/4	366	(400-3/4)	
LNAV MDA***	440-1/2 419 (500-1/2)	440-3/4 419 (500-3/4)		
CIRCLING	500-1 477 (500-1)	560-1 1/2 537 (600-1 1/2)	800-2 1/2 777 (800-2 1/2)	

5070 x 200

9003 x 200

096° to RWY 10

BCN 167

H 196

Lead-in lights

HIRL Rwy 10-28

HIRL Rwy 14-32

REIL Rwy 32

JACKSONVILLE, FLORIDA

Orig 10OCT19

30°14'N - 81°41'W

JACKSONVILLE NAS (TOWERS FLD) (KNIP)

RNAV (GPS) Z RWY 10

SE-3, 03 DEC 2020 to 31 DEC 2020

SE-3, 03 DEC 2020 to 31 DEC 2020