

JACKSONVILLE, FLORIDA

RNAV (GPS) Z RWY 28

WAAS CH 46924 W28A	APCH CRS 276°	Rwy ldg TDZE 13 Arpt Elev 23	9003
--------------------------	------------------	------------------------------------	------

AL-209 (USN)

JACKSONVILLE NAS (TOWERS FLD) (KNIP)

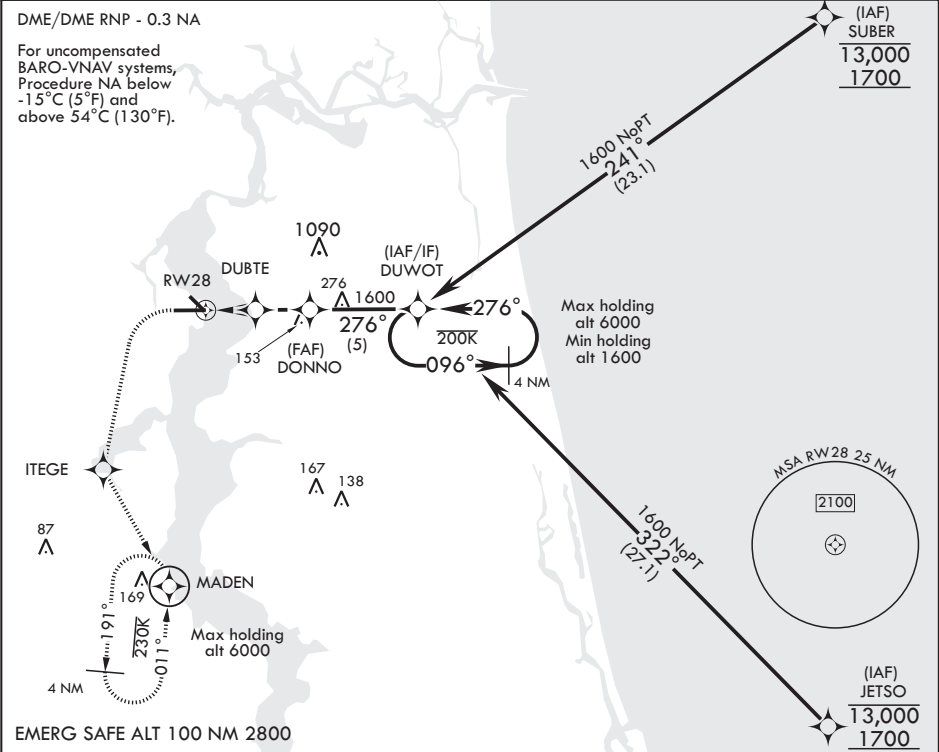
⚠ * When ALS inop, increase CAT ABCD to 7/8 mile.
** When ALS inop, increase CAT AB vis to 1 mile, CAT CD vis to 1 1/8 miles.

SALS



MISSED APPROACH: Climb to 600 then climbing left turn to 2000 direct ITEGE, track 156° to MADEN and hold.

ATIS 124.35 290.425	APP CON/DEP CON 127.775 377.075	TOWER 125.15 (CTAF) 340.2	GND CON 128.6 336.4	CLNC DEL 134.775 353.675	ASR/PAR
------------------------	------------------------------------	------------------------------	------------------------	-----------------------------	---------



600 **2000** **ITEGE**

† LNAV only

DONNO **DUWOT**

DUBTE

RWY 28 **1 NM to RWY 28**

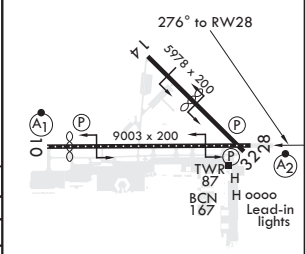
800 **1600** **3000**

GP 3.00° **TCH 60**

2.3 NM **2.5 NM**

ELEV 23 **TDZE 13**

Rwy 10 ldg 8006'
Rwy 14 ldg 3244'



CATEGORY	A	B	C	D
LPV DA	213-3/4	200	(200-3/4)	
LNAV/VNAV DA*	280-3/4 267 (300-3/4)	291-3/4 278 (300-3/4)	299-3/4 286 (300-3/4)	310-3/4 297 (300-3/4)
LNAV MDA**	400-3/4 387 (400-3/4)	420-3/8 387 (400-3/8)	560-1 1/2 537 (600-1 1/2)	800-2 1/2 777 (800-2 1/2)
CIRCLING	500-1 477 (500-1)			

HIRL Rwy 10-28
HIRL Rwy 14-32
REIL Rwy 32

JACKSONVILLE, FLORIDA

30°14'N - 81°41'W

JACKSONVILLE NAS (TOWERS FLD) (KNIP)

Orig 10OCT19

RNAV (GPS) Z RWY 28

SE-3, 03 DEC 2020 to 31 DEC 2020

SE-3, 03 DEC 2020 to 31 DEC 2020