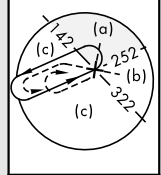


TACAN Chan <b>78</b>	APCH CRS <b>044°</b>	Rwy Idg TDZE Arpt Elev <b>7002</b> <b>4</b> <b>6</b>	JAL-214 [USN]	KEY WEST NAS (BOCA CHICA FLD) (KNQX)
-------------------------	-------------------------	---	---------------	--------------------------------------

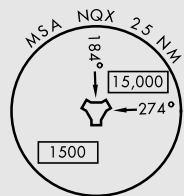
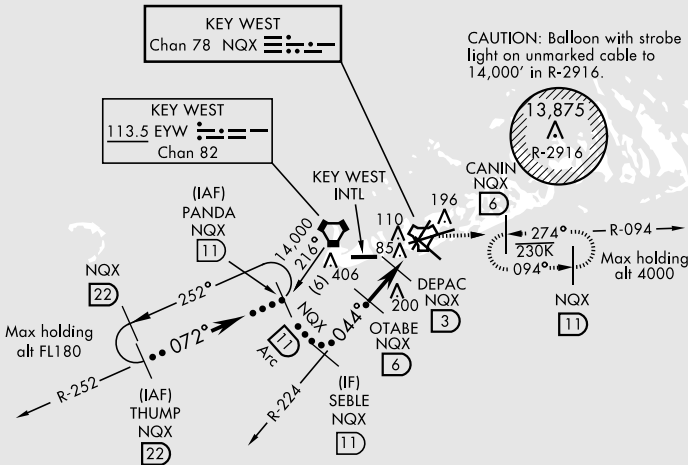
# HI-TACAN Z RWY 4

<div>M</div>		MISSED APPROACH: Climb to 1600 via NQX TACAN R-224 to NQX then via NQX R-094 to CANIN and hold.				
ATIS ★ 307.025	NAVY KEY WEST APP CON 124.025 313.7		NAVY KEY WEST TOWER ★ 118.575 340.25	GND CON 121.7 336.45	CLNC DEL 121.2 357.4	ASR/PAR

EYW VORTAC feeder to PANDA requires turn in hold.  
Short intermediate, (5 NM) recommend early configuration.



CAUTION: Balloon with strobe light on unmarked cable to 14,000' in R-2916.



EMERG SAFE ALT 100 NM 15,000

THUMP R-252 PANDA R-252 SEBLE R-224 OTABE DEPAC TACAN HEVEL NQX R-094			ELEV 6	TDZE 4
↑ DEPAC to MAP 14,000 Or as directed by ATC 072° 4100 3.04° TCH 35 1600 Arc 1600 1600 640 3 NM 1.2 NM 7				
CATEGORY	C	D	E	
S-4	340-1	336	(400-1)	
CIRCLING	500-1½ 494 (500-1½)	560-2	554	(600-2)

# HI-TACAN Z RWY 4