

KEY WEST, FLORIDA

TACAN RWY 32

TACAN	NQX	APCH CRS	Rwy ldg	7001
Chan 78		335°	TDZE	4
			Arprt Elev	6

AL-214 [USN] KEY WEST NAS (BOCA CHICA FLD) (KNQX)

ATIS ★ 307.025		NAVY KEY WEST APP CON 124.025 313.7		NAVY KEY WEST TOWER ★ 118.575 340.25		GND CON 121.7 336.45		CLNC DEL 121.2 357.4		ASR/PAR
-------------------	--	--	--	---	--	-------------------------	--	-------------------------	--	---------

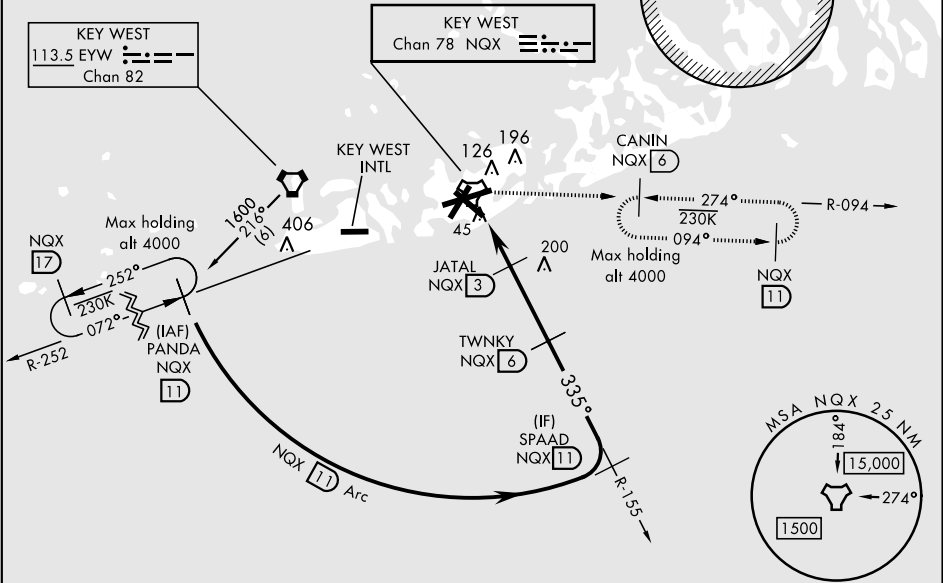
CAUTION: CAT CD intmd seg len 5 NM.

† CAUTION: Missed Approach
Minimum Climb Rate to 1600

Knots	60	120	180	240	300	360
V/V(fpm)	280	560	840	1120	1400	1680

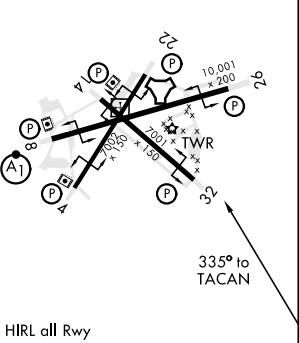
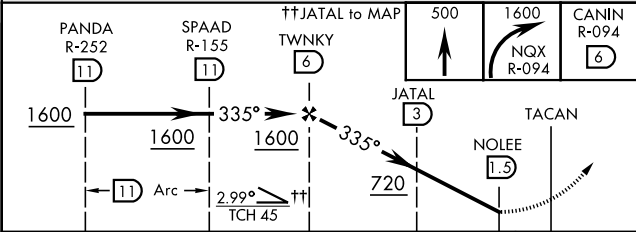
ATC Minimum Climb Rate

CAUTION: Balloon with strobe
light on unmarked cable to
14,000 in R-2916.



EMERG SAFE ALT 100 NM 15,000

ELEV 6	TDZE 4
--------	--------



CATEGORY	A	B	C	D
S-32		300-1	296 (300-1)	
CIRCLING	460-1 454 (500-1)	500-1 494 (500-1)	500-1½ 494 (500-1½)	560-2 554 (600-2)

KEY WEST, FLORIDA

24°34'N-81°41'W

KEY WEST NAS (BOCA CHICA FLD) (KNQX)

Amtd 3 21MAY20

TACAN RWY 32

SE-3, 03 DEC 2020 to 31 DEC 2020

SE-3, 03 DEC 2020 to 31 DEC 2020