

## VOR/DME RWY 26

EYW VORTAC <b>113.5</b> Chan <b>82</b>	APCH CRS <b>270°</b>	Rwy ldg <b>10,001</b> TDZE <b>6</b> Arpt Elev <b>6</b>
--	-------------------------	--

AL-214 [USN]

KEY WEST NAS (BOCA CHICA FLD) (KNQX)

<b>ATIS ★</b> <b>307.025</b>		<b>NAVY KEY WEST APP CON</b> <b>124.025 313.7</b>		<b>NAVY KEY WEST TOWER ★</b> <b>118.575 340.25</b>		<b>GND CON</b> <b>121.7 336.45</b>		<b>CLNC DEL</b> <b>121.2 357.4</b>		<b>ASR/PAR</b>
---------------------------------	--	--	--	---	--	---------------------------------------	--	---------------------------------------	--	----------------

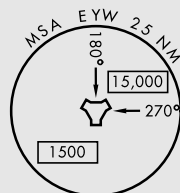
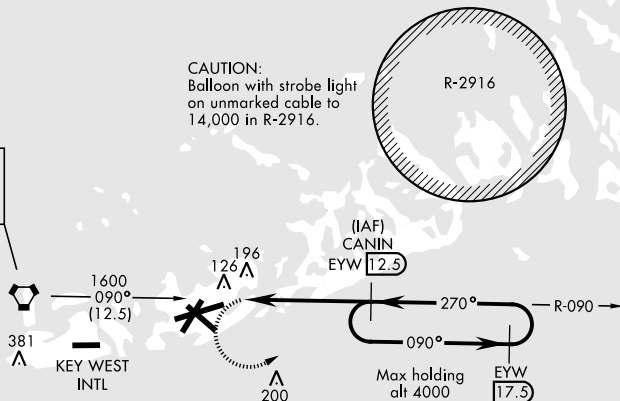
† MISSED APPROACH: Climbing left turn to 1600 to intercept EYW R-090 to CANIN and hold.

CAUTION: Final approach course crosses the extended runway centerline 5022' from threshold.

Knots	60	120	180	240	300	360
V/V(fpm)	290	580	870	1160	1450	1740

† CAUTION: Missed Approach  
Minimum Climb Rate to 1600

KEY WEST  
**113.5** EYW  
Chan 82



## RADAR REQUIRED

EMEG SAFE ALT 100 NM 15,000

EMEG SAFE ALT 100 NM 15,000					ELEV 6		TDZE 6	
<div>1600 EYW R-090</div>		<div>CANIN EYW R-090 12.5</div>		<div>(IAF) CANIN EYW R-090 12.5</div>		<div>VGSI and descent angles to coincident. (VGSI angle 3.00/TCH 43)</div>		
<div><div>UBUYA 7.9</div><div>090° 1600</div><div>270° 1600</div><div>270°</div><div>2.72° TCH 43</div></div>					<div>270° 5.5 NM from FAF</div>			
0.9 NM		4.6 NM						
CATEGORY	A	B	C	D				
S-26	460-1	454 (500-1)	460-1 1/8	454 (500-1 3/8)				
CIRCLING	460-1	500-1	500-1 1/2	560-2				
	454 (500-1)	494 (500-1)	494 (500-1 1/2)	554 (600-2)				
					HIRL all Rwy			

HIRL all Rwy

## VOR/DME RWY 26