

WAAS CH 70438 W18A	APP CRS 182°	Rwy Idg TDZE 110 Apt Elev 110	6001
--	------------------------	---	-------------

RNAV (GPS) RWY 18

MARIANNA MUNI (MAI)

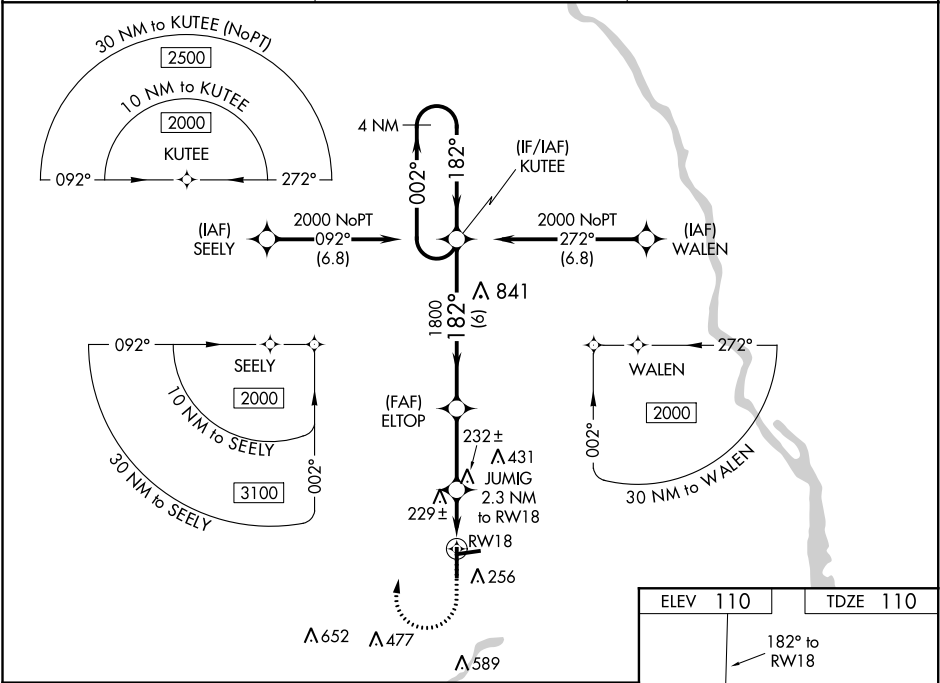
⚠

⚠

Night landing: Rwy 26 NA. For uncompensated Baro-VNAV systems, LNAV/VNAV NA below -5°C (23°F) or above 54°C (130°F). Baro-VNAV and VDP NA when using Bainbridge altimeter setting. DME/DME RNP-0.3 NA. Helicopter visibility reduction below ¾ SM NA. When local altimeter setting not received, use Bainbridge altimeter setting and increase all DA 72 feet and all MDA 80 feet; increase LPV and LNAV/VNAV all Cats and Circling Cat D visibility ¼ mile and LNAV Cats C/D visibility ⅓ mile.

MISSED APPROACH:
Climb to 600 then climbing right turn to 2000 direct KUTEE and hold.

ASOS 133.525	CAIRNS APP CON ★ 133.75 270.35	UNICOM 123.0 (CTAF) 0
------------------------	--	---------------------------------



4 NM Holding Pattern KUTEE		ELTOP	JUMIG 2.3 NM to RWY 18	*1 NM to RWY 18	RWY 18
2000 ← 002° 182° →		1800	1800	*880	
GP 3.00° TCH 37					
		6 NM	2.9 NM	1.3 NM	1 NM
CATEGORY	A	B	C	D	
LPV DA		360-7/8	250 (300-7/8)		
LNAV/VNAV DA		500-1 3/8	390 (400-1 3/8)		
LNAV MDA		480-1	370 (400-1)		
CIRCLING	620-1	510 (600-1)	620-1 1/2 510 (600-1 1/2)	900-2 1/2 790 (800-2 1/2)	

