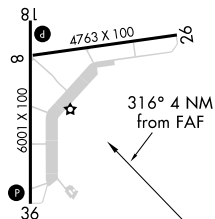
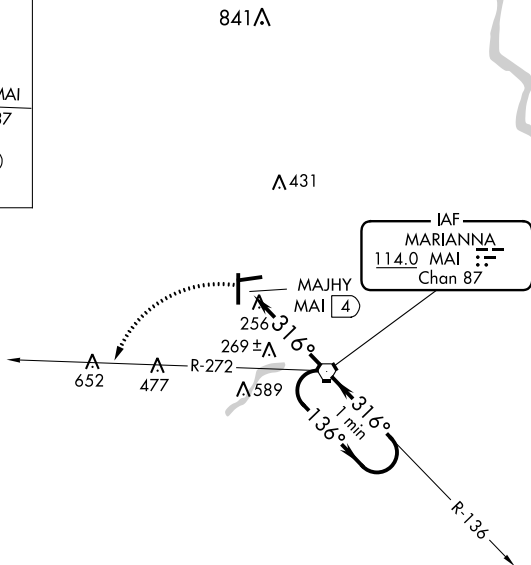
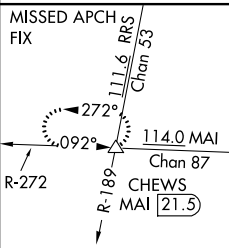
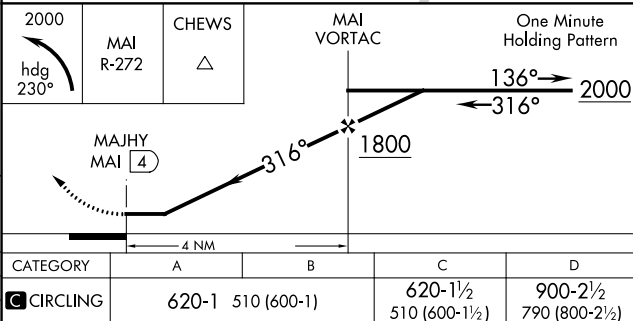


VOR-A
MARIANNA MUNI (MAI)

MISSED APPROACH: Climbing left turn to 2000 via heading 230° and MAI R-272 to CHEWS INT/MAI 21.5 DME and hold.

CAIRNS APP CON ★
133.75 270.35

UNICOM
123.0 (CTAF) **L**

MIRL Rwy 18-36 **L**

MARIANNA MUNI (MAI)
VOR-A