


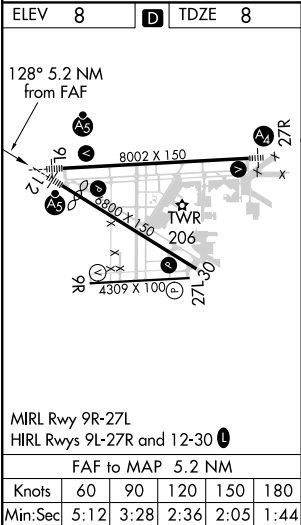
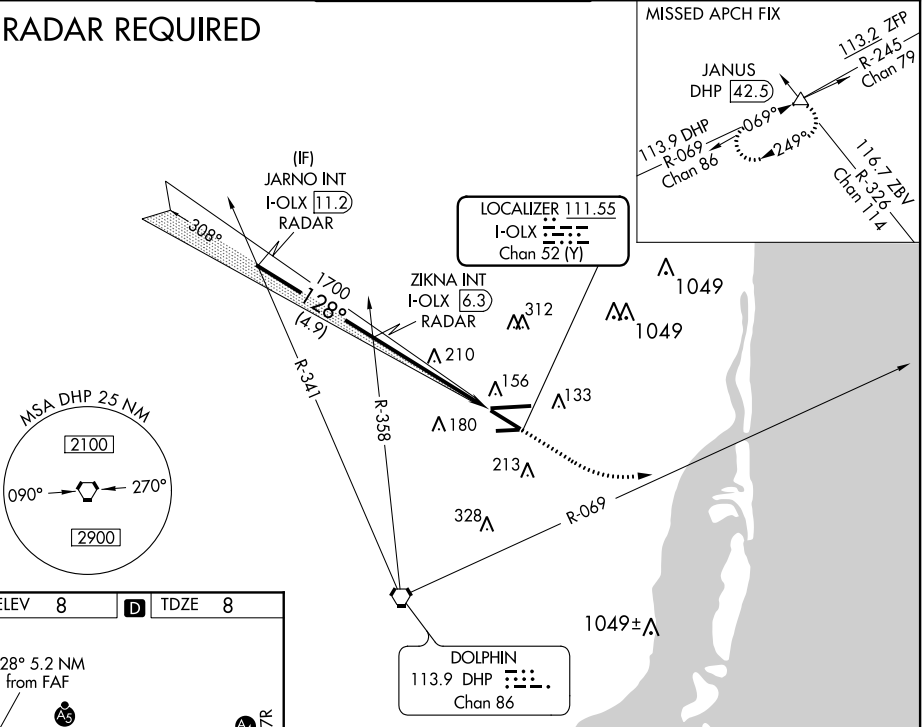
LOC/DME I-OLX 111.55 Chan 52 (Y)	APP CRS 128°	Rwy Idg TDZE Apt Elev 8	6000 8 8
--	------------------------	--------------------------------------	-------------------------------------

ILS or LOC RWY 12
MIAMI-OPA LOCKA EXECUTIVE (OPF)

<p>⚠ Inoperative table does not apply to S-ILS 12. Helicopter visibility reduction below $\frac{3}{4}$ SM NA. VDP NA with Miami Intl altimeter setting. When local altimeter setting not received, use Miami Intl altimeter setting and increase all DA/MDA 20 feet. For inoperative MALS, increase S-LOC 12 Cats A and B visibility to 1 mile and Cats C and D visibility to $1\frac{3}{8}$ miles.</p>	<p>MALS</p> 	<p>MISSED APPROACH: Climb to 800 then climbing left turn to 2000 on heading 090° and DHP VORTAC R-069 to JANUS INT/DHP 42.5 DME and hold.</p>
--	---	---

ATIS 125.9	MIAMI APP CON 128.6 306.975	OPA LOCKA TOWER ★ 134.675 (CTAF) 0	GND CON 120.025	CLNC DEL 119.2
----------------------	---------------------------------------	--	---------------------------	--------------------------

RADAR REQUIRED



JARNO INT I-OLX 11.2 RADAR		ZIKNA INT I-OLX 6.3 RADAR		800 ↑	2000 hdg 090°	DHP R-069	JANUS △
				*LOC only.			
1700		1700					
128°		1700					
GS 3.00° TCH 53							
4.9 NM		3.7 NM		1.5 NM			
CATEGORY	A	B	C	D			
S-ILS 12	208-¾ 200 (200-¾)						
S-LOC 12	520-¾ 512 (600-¾)			520-1 512 (600-1)			
CIRCLING	540-1 532 (600-1)			540-1½ 532 (600-1½)		560-2 552 (600-2)	