
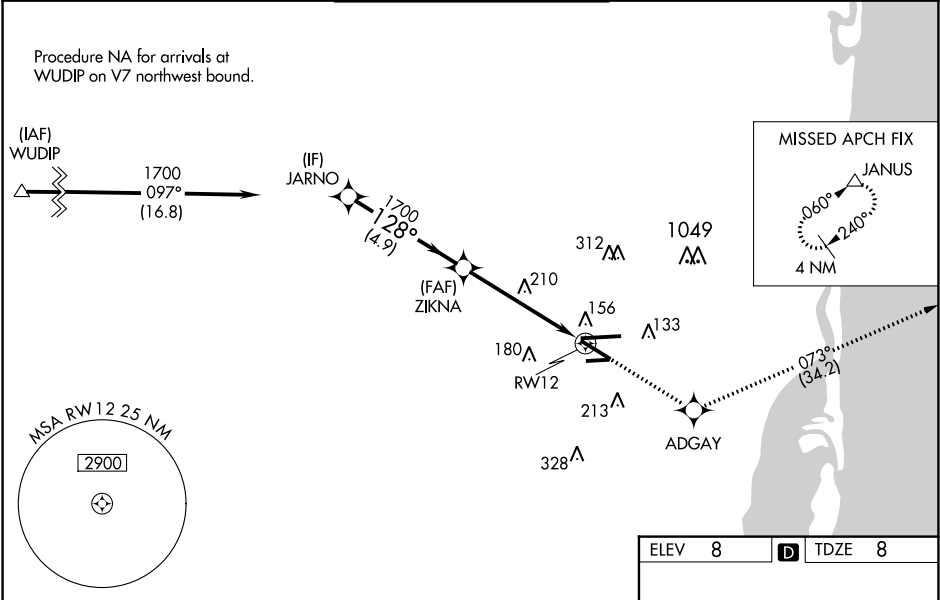


WAAS CH 69522 W12A	APP CRS 128°	Rwy Idg TDZE Apt Elev	6000 8 8
--	------------------------	-----------------------------	-------------------------------------

RNAV (GPS) RWY 12
MIAMI-OPA LOCKA EXECUTIVE (OPF)

<p>▼ Baro-VNAV NA when using Miami Intl altimeter setting. For uncompensated Baro-VNAV systems, LNAV/VNAV NA below -15°C (5°F) or above 43°C (109°F). Helicopter visibility reduction below ¾ SM NA. DME/DME RNP-0.3 NA. VDP NA with Miami Intl altimeter setting. When local altimeter setting not received, use Miami Intl altimeter setting and increase all DA/MDA 20 feet. Inoperative table does not apply. For inoperative MALSR, increase LNAV/VNAV all Cats visibility and LNAV Cats A and B to 1 mile and LNAV Cats C and D visibility to 1½ miles. For inoperative MALSR, when using Miami Intl altimeter setting, increase LNAV/VNAV all Cats visibility and LNAV Cats A and B visibility to 1 mile.</p>	<p>MALSR</p> 	<p>MISSED APPROACH: Climb to 2000 direct ADGAY and on track 073° to JANUS and hold.</p>
---	---	--

ATIS 125.9	MIAMI APP CON 128.6 306.975	OPA LOCKA TOWER ★ 134.675 (CTAF) 0	GND CON 120.025	CLNC DEL 119.2
----------------------	---------------------------------------	--	---------------------------	--------------------------



<table><tr><td>2000</td><td>ADGAY</td><td>tr 073°</td><td>JANUS</td></tr></table> <p>*LNAV only.</p>					2000	ADGAY	tr 073°	JANUS					
2000	ADGAY	tr 073°	JANUS										