

WAAS CH 62922 W27A	APP CRS 273°	Rwy Idg 8002 TDZE 8 Apt Elev 8
--	------------------------	---

RNAV (GPS) RWY 27R
MIAMI-OPA LOCKA EXECUTIVE (OPF)

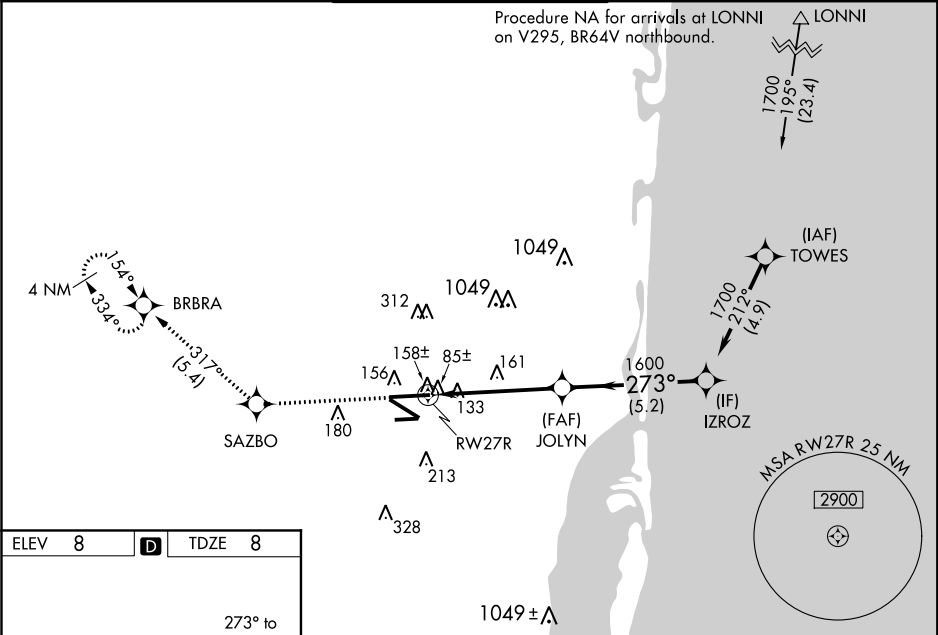
Baro-VNAV NA when using Miami Intl altimeter setting. For uncompensated Baro-VNAV systems, LNAV/VNAV NA below 5°C (41°F) or above 54°C (130°F). DME/DME RNP-0.3 NA. When local altimeter setting not received, use Miami Intl altimeter setting and increase all DA/MDA 20 feet. For inop MALS, increase LPV all Cats visibility to ¾ mile, LNAV/VNAV all Cats to 1¾, and LNAV Cats C and D visibility to 1½ mile. Helicopter visibility reduction below ¾ SM NA.

MALS

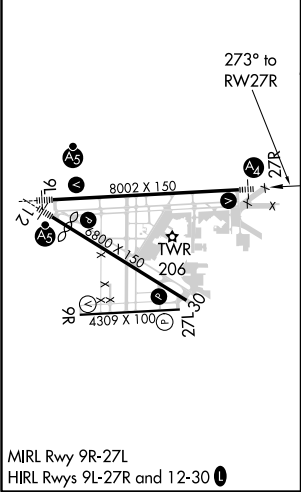
A₂

MISSED APPROACH: Climb to 2000 direct SAZBO and on track 317° to BRBRA and hold.

ATIS 125.9	MIAMI APP CON 128.6 306.975	OPA LOCKA TOWER ★ 134.675 (CTAF) 1	GND CON 120.025	CLNC DEL 119.2
----------------------	---------------------------------------	--	---------------------------	--------------------------



ELEV 8	D	TDZE 8
---------------	----------	---------------



2000	SAZBO	BRBRA	VGSI and RNAV glidepath not coincident (VGSI Angle 3.00/TCH 53).	
↑	tr 317°		JOLYN	IZROZ
*LNAV only. *1.1 NM to RW27R				
RW27R				
1.1 NM 3.7 NM 5.2 NM				
CATEGORY	A	B	C	D
LPV DA	291-¾		283 (300-¾)	
LNAV/VNAV DA	413-1		405 (500-1)	
LNAV MDA	420-¾	412 (500-¾)	420-1	412 (500-1)
CIRCLING	540-1	532 (600-1)	540-1½ 532 (600-1½)	560-2 552 (600-2)