

WAAS CH <b>42703</b> <b>W08A</b>	APP CRS <b>092°</b>	Rwy Idg <b>8600</b> TDZE <b>9</b> Apt Elev <b>9</b>
--	------------------------	---

RNAV (GPS) RWY 8L

MIAMI INTL (MIA)

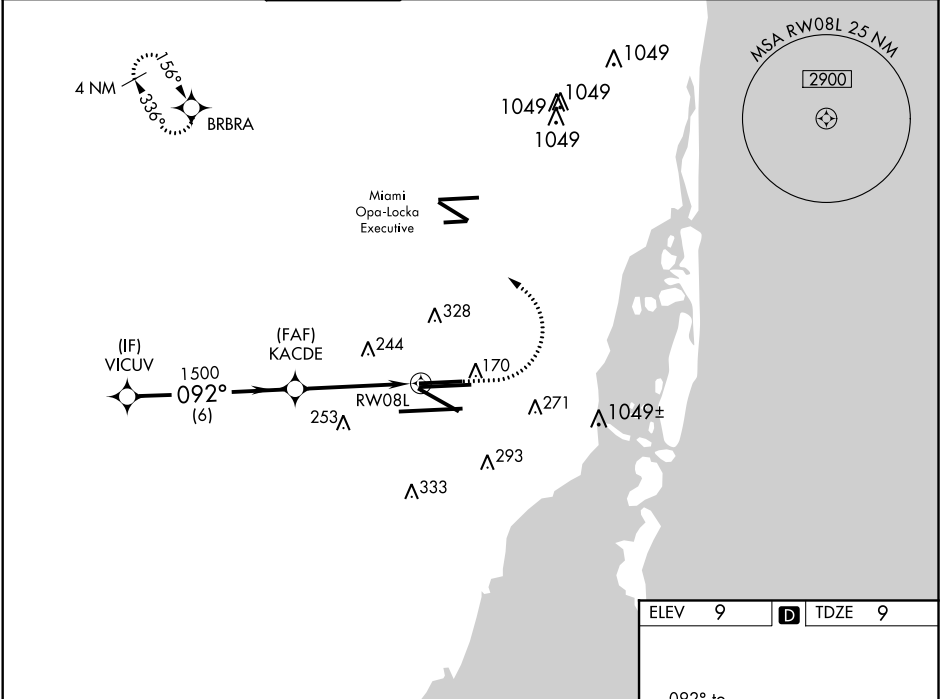
RNP APCH.

▼

For uncompensated Baro-VNAV systems, LNAV/VNAV NA below 5°C (41°F) or above 54°C (130°F). Simultaneous approach authorized with Rwy 9. Rwy 8L helicopter visibility reduction below ¾ SM NA. LNAV procedure NA during simultaneous operations. Use of FD or AP providing RNAV track guidance required during simultaneous operations.

MISSED APPROACH: Climb to 800 then climbing left turn to 3000 direct BRBRA and hold.

D-ATIS ARR <b>119.15</b> DEP <b>133.675</b>	MIAMI APP CON <b>124.85 322.3</b>	MIAMI TOWER <b>118.3 256.9</b>	GND CON <b>121.8</b> (8L/8R/12/26L/26R) <b>127.5</b> (9/27/30)	<b>348.6</b>	CLNC DEL <b>135.35</b>	CPDLC
---	--------------------------------------	-----------------------------------	--	--------------	---------------------------	-------



VICUV		KACDE		RWY 8L	
3000		1500		800	
092°		092°		092°	
GP 3.00°		1500		*1.7 NM to RWY 8L	
TCH 60		6 NM		2.8 NM	
CATEGORY		A		D	
LPV DA		279-1		270 (300-1)	
LNAV/VNAV DA		513-1½		504 (600-1½)	
LNAV MDA		600-1		591 (600-1)	

ELEV 9 TDZE 9

092° to RWY 8L

TDZ/CL Rwy 8R  
REIL Rwys 8L and 26R  
HIRL all Rwys