


MIAMI, FLORIDA

AL-257 (FAA)

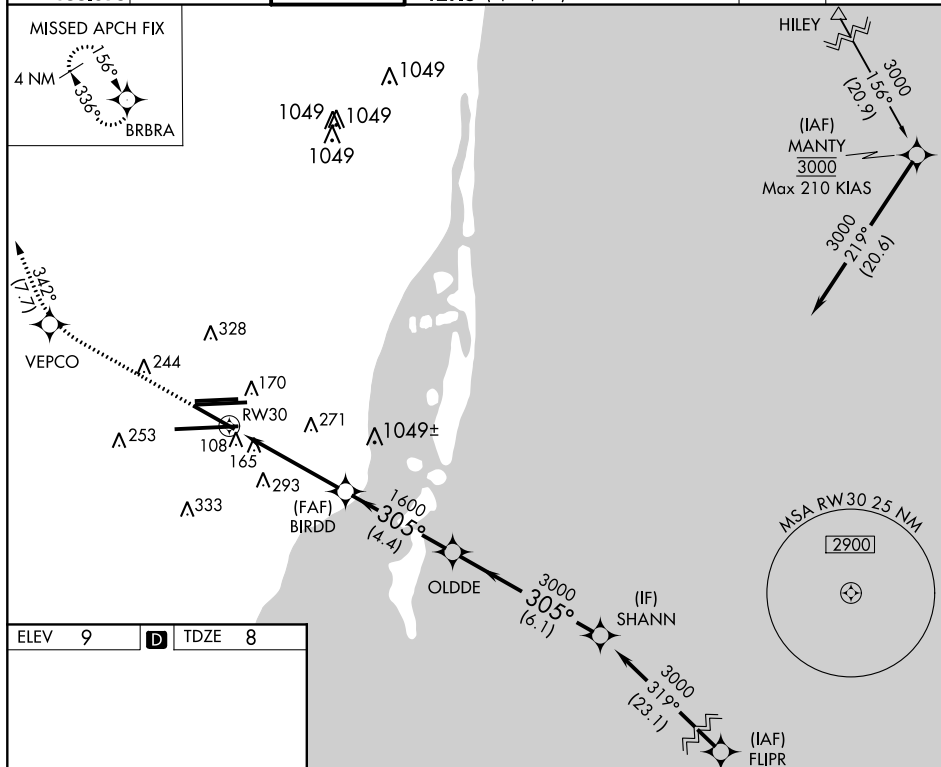
19115

|             |          |             |
|-------------|----------|-------------|
| APP CRS     | Rwy Idg  | <b>7913</b> |
| <b>305°</b> | TDZE     | <b>8</b>    |
|             | Apt Elev | <b>9</b>    |

RNAV (RNP) Y RWY 30  
MIAMI INTL (MIA)

|  |   |  |
|--|---|--|
| <p><b>⚠</b> For inoperative MALS, increase RNP 0.23 all Cats visibility to 1½, RNP 0.30 all Cats to 1¾. GPS Required.</p> <p><b>⚠ NA</b> For uncompensated Baro-VNAV systems, procedure NA below 6°C (42°F) or above 48°C (119°F).</p> | <p><b>MALS</b></p> <p><b>(A4)</b> </p> | <p><b>MISSED APPROACH:</b> Climb to 3000 direct VEP/CO and via 342° track to BRBRA and hold.</p> |
|--|---|--|

|     |         |               |             |                          |       |          |       |
|-----|---------|---------------|-------------|--------------------------|-------|----------|-------|
| ARR | D-ATIS  | MIAMI APP CON | MIAMI TOWER | GND CON                  |       | CLNC DEL | CPDLC |
| DEP | 119.15  | 124.85 322.3  | 118.3 256.9 | 121.8 (8L/8R/12/26L/26R) | 348.6 | 135.35   |       |
|     | 133.675 |               |             | 127.5 (9/27/30)          |       |          |       |

[illegible]

MIAMI, FLORIDA  
Orig-A 30JUN11

25°48'N-80°17'W

MIAMI INTL (MIA)  
RNAV (RNP) Y RWY 30

SE-3, 03 DEC 2020 to 31 DEC 2020

SE-3, 03 DEC 2020 to 31 DEC 2020