
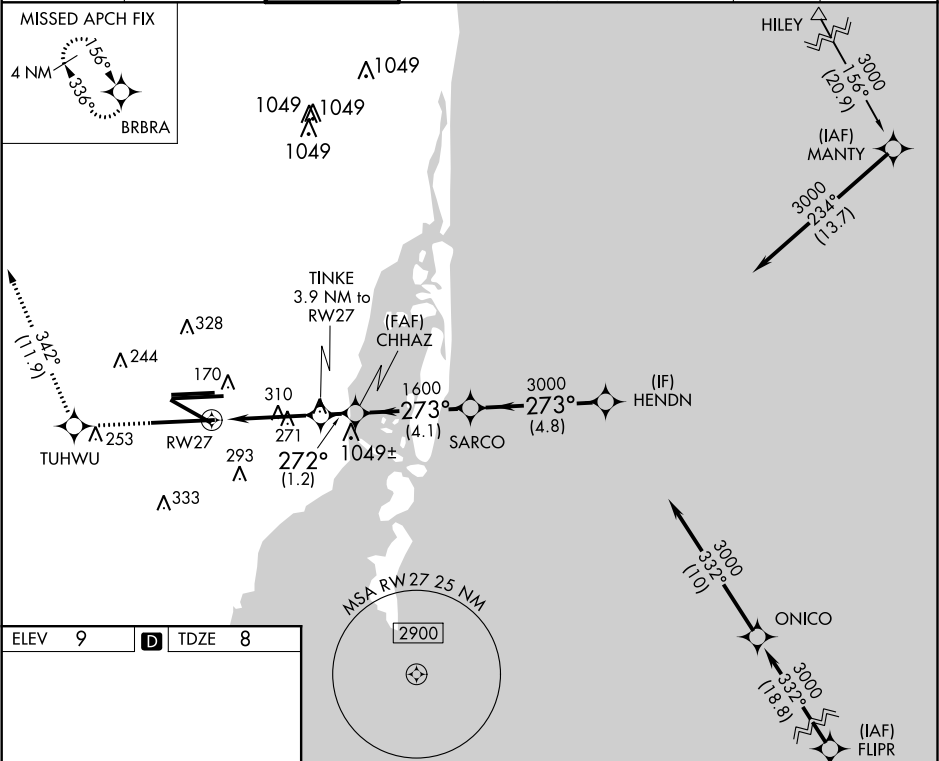


WAAS CH <b>40205</b> <b>W27A</b>	APP CRS <b>272°</b>	Rwy Idg <b>12755</b> TDZE <b>8</b> Apt Elev <b>9</b>
--	------------------------	--

RNAV (GPS) Z RWY 27  
MIAMI INTL (MIA)

<p>▼ For uncompensated Baro-VNAV systems, LNAV/VNAV NA below 6°C (43°F) or above 54°C (130°F). DME/DME RNP-0.3 NA. For inop MALSR, increase LPV Cat E visibility to RVR 4000, LNAV/VNAV all Cats visibility to 1½ mile, and LNAV Cat E visibility to 1¾ mile. **RVR 1800 authorized with use of FD or AP or HUD to DA.</p>	<p>MALSR</p> 	<p>MISSED APPROACH: Climb to 2000 direct TUHWU and on track 342° to BRBRA and hold.</p>
--	--	---

D-ATIS ARR <b>119.15</b> DEP <b>133.675</b>	MIAMI APP CON <b>124.85 322.3</b>	MIAMI TOWER <b>118.3 256.9</b>	GND CON <b>121.8</b> (8L/8R/12/26L/26R) <b>127.5</b> (9/27/30)	<b>348.6</b>	CLNC DEL <b>135.35</b>	CPDLC
---	--------------------------------------	-----------------------------------	--	--------------	---------------------------	-------



ELEV 9	D	TDZE 8
<p>TDZ/CL Rwy 8R REIL Rwy 8L and 26R HIRL all Rwy 8</p>		
<p>2000 TUHWU tr 342° BRBRA VGS and RNAV glidepath not coincident (VGS Angle 3.00/TCH 71).</p>		
<p>*LNAV only. TINKE 3.9 NM to RW27 CHHAZ SARCO HENDN</p>		
<p>*1.5 NM to RW27 *1300 272° 273° 3000 GP 3.00° TCH 55</p>		
CATEGORY	A	B C D E
LPV DA**	208/24	200 (200-½)
LNAV/VNAV DA	440/50	432 (500-1)
LNAV MDA	560/24	552 (600-½) 560/60 552 (600-1½)