


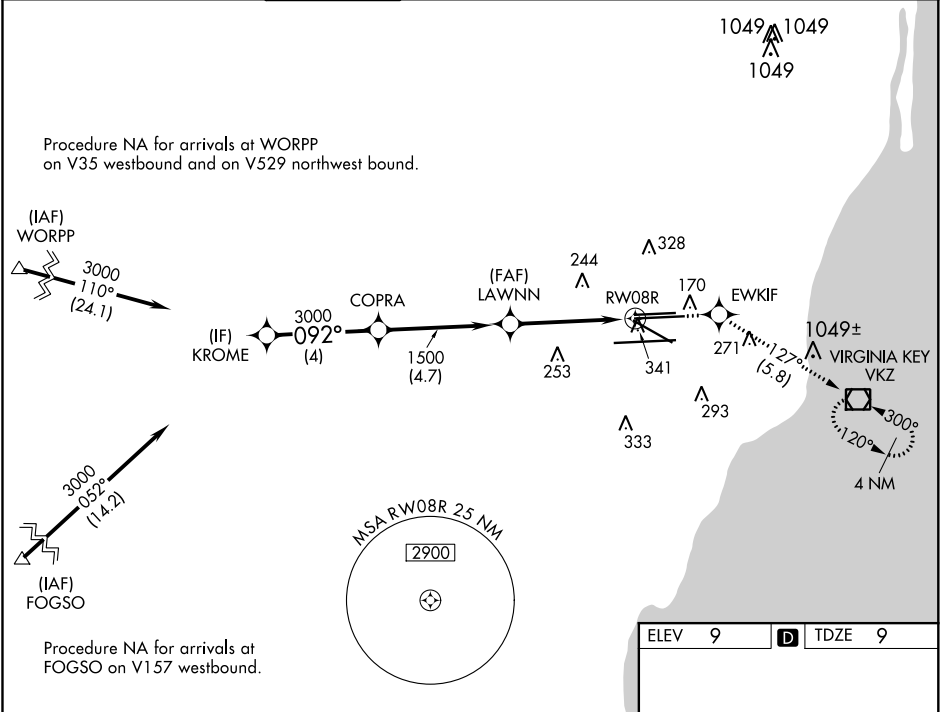
WAAS CH 97404 W08B	APP CRS 092°	Rwy Idg 10506 TDZE 9 Apt Elev 9
--	------------------------	--

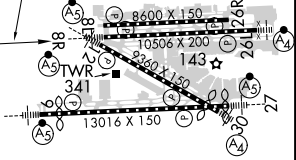
RNAV (GPS) Z RWY 8R

MIAMI INTL (MIA)

RNP APCH. ▼ Rwy 8R helicopter visibility reduction below RVR 4000 NA. For uncompensated Baro-VNAV systems, LNAV/VNAV NA below 8°C or above 54°C. For inop ALS, increase LPV all Cats visibility to RVR 4500, LNAV/VNAV Cats C and D visibility to 1½ SM and LNAV Cats A and B visibility to RVR 5500.	MALSR 	MISSED APPROACH: Climb to 3000 direct EWKIF and on track 127° to VKZ VOR/DME and hold.
--	--	--

D-ATIS ARR 119.15 DEP 133.675	MIAMI APP CON 124.85 322.3	MIAMI TOWER 118.3 256.9	GND CON 121.8 (8L/8R/12/26L/26R) 127.5 (9/27/30)	348.6	CLNC DEL 135.35	CPDLC
---	--------------------------------------	-----------------------------------	--	--------------	---------------------------	-------



VGSI and RNAV glidepath not coincident (VGSI Angle 3.00/TCH 77).				3000	EWKIF	tr 127°	VKZ			
KROME COPRA				*LNAV only.						
3000 092° 3000 092° 1500				*1.6 NM to RW08R						
GP 3.00° TCH 51				RW08R						
4 NM 4.7 NM 2.9 NM 1.6 NM										
CATEGORY	A	B	C	D						
LPV DA	277/40 268 (300-¾)									
LNAV/ VNAV DA	531/60 522 (600-1¼)									
LNAV MDA	600/40 591 (600-¾)		600-1¼ 591 (600-1¼)							

ELEV 9

TDZE 9

TDZ/CL Rwy 8R
REIL Rwy 8L and 26R
HIRL all Rwy 8