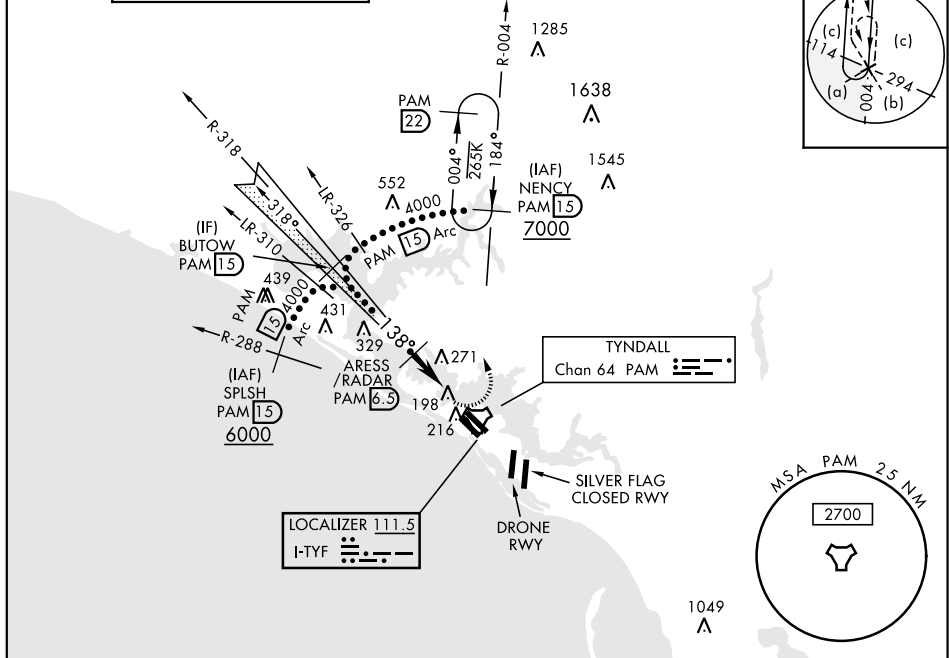


HI-ILS or LOC Y RWY 14L

LOC I-TYF 111.5	APCH CRS 138°	Rwy Idg 10,008 TDZE 14 Arpt Elev 17	JAL-312 [USAF]	TYNDALL AFB (KPAM)
---------------------------	-------------------------	--	----------------	--------------------

DME or RADAR required	ALSIF-1 (A1)	MISSED APPROACH: Climbing left turn to 3000, intercept PAM TACAN R-004 to 1.5 DME (NENCY) and hold.
-----------------------	-----------------	---

ATIS ★ 254.4	TYNDALL APP CON 125.2 392.1 (N abv 5000') 120.825 379.3 (N blw 5000') 124.15 338.35 (S abv 5000') 119.775 317.45 (S blw 5000')	TYNDALL TOWER ★ 133.95 263.15	GND CON 121.9 259.3	CLNC DEL 118.05 348.7	ASR/PAR
------------------------	--	---	-------------------------------	---------------------------------	---------



EMERG SAFE ALT 100 NM 3300

CATEGORY	C	D	E
S-ILS 14L *	214/24	200	(200-½)
S-LOC 14L **	420/40	406	(500-¾)
C CIRCLING	560-1½ 543 (600-1½)	580-2 563 (600-2)	620-2¼ 603 (700-2¼)

Recommend Rwy 14L-32R for apch end engagement of A-Gear.

FAF to MAP 5.3 NM					
Knots	120	140	160	180	200
Min:Sec	2:39	2:16	1:59	1:46	1:35

HI-ILS or LOC Y RWY 14L