

# HI-TACAN Y RWY 32R

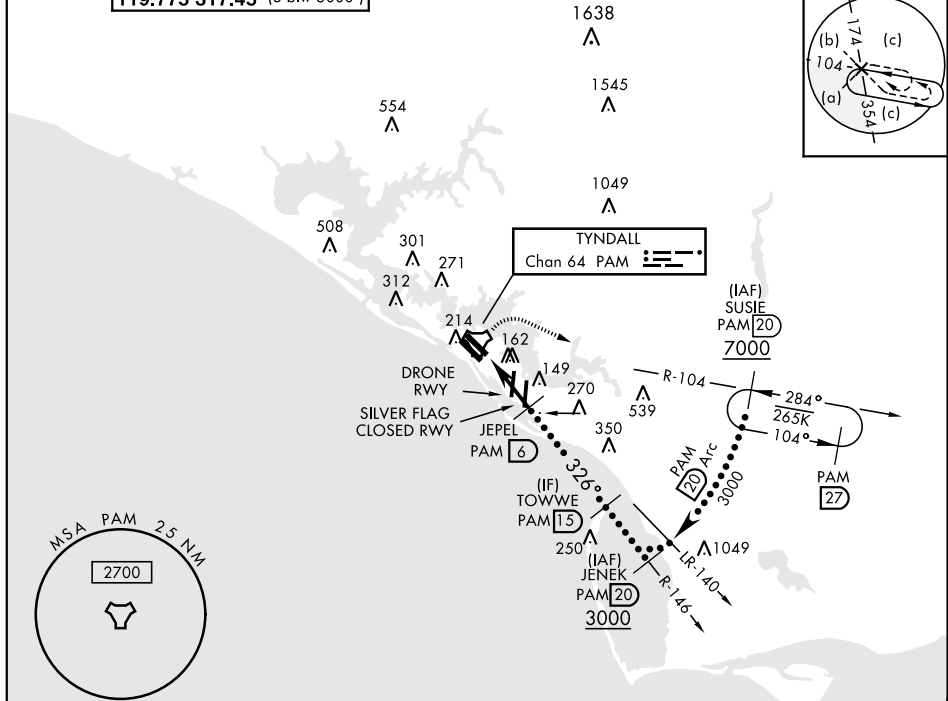
TACAN PAM Chan <b>64</b>	APCH CRS <b>326°</b>	Rwy Idg <b>10,008</b> TDZE <b>14</b> Arpt Elev <b>17</b>	JAL-312 [USAF]	TYNDALL AFB (KPAM)
-----------------------------	-------------------------	--	----------------	--------------------

▼ When ALS inop, increase vis to 1½ miles.

ALSF-1  
A1

MISSED APPROACH: Climbing right turn to 3000, intercept PAM TACAN R-104 to 20 DME (SUSIE) and hold.

ATIS ★ <b>254.4</b>	TYNDALL APP CON <b>125.2 392.1</b> (N abv 5000') <b>120.825 379.3</b> (N blw 5000') <b>124.15 338.35</b> (S abv 5000') <b>119.775 317.45</b> (S blw 5000')	TYNDALL TOWER ★ <b>133.95 263.15</b>	GND CON <b>121.9 259.3</b>	CLNC DEL <b>118.05 348.7</b>	ASR/PAR
------------------------	--	---	-------------------------------	---------------------------------	---------

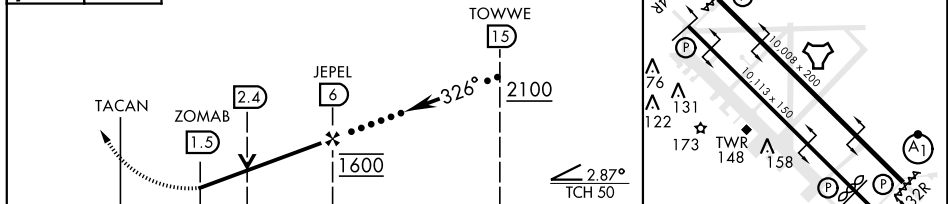


EMERG SAFE ALT 100 NM 3300

3000  
PAM R-104

SUSIE PAM 20

VGSI and descent angles not coincident (VGSI Angle 2.50/TCH 50)



CATEGORY	C	D	E
S-32R *	460/45	446 (500-7½)	
CIRCLING	560-1½ 543 (600-1½)	580-2 563 (600-2)	620-2¼ 603 (700-2¼)

# HI-TACAN Y RWY 32R